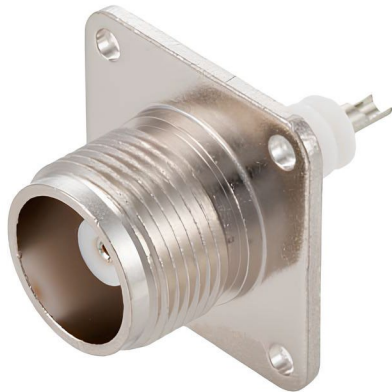


DATASHEET



ELECTRICAL SPECIFICATIONS:

Frequency range	dc - 4 GHz
Impedance	50 Ω
VSWR	≤1.30
Voltage rating	1500 V _{RMS}
Insulation resistance	≥5000 MΩ
Center contact resistance	≤1.5 mΩ
Outer contact resistance	≤0.2 mΩ
Temperature range	-55 / +155 °C
Lifetime (matings)	≥500

MATERIAL SPECIFICATIONS:

	Materials	Finishes
Connector body	Brass	Nickel plating
Center contact	BeCu	Silver plating
Insulator	PTFE	-

CABLE GROUP:

-



Unit: mm

