

DATASHEET



ELECTRICAL SPECIFICATIONS:

Frequency range	dc – 11 GHz
Impedance	50 Ω
VSWR	≤1.30
Working voltage	1 kV _{RMS}
Insulation resistance	5000 MΩ min.
Temperature range	-55 / +125 °C
Lifetime	>500 mating

MATERIAL SPECIFICATIONS:

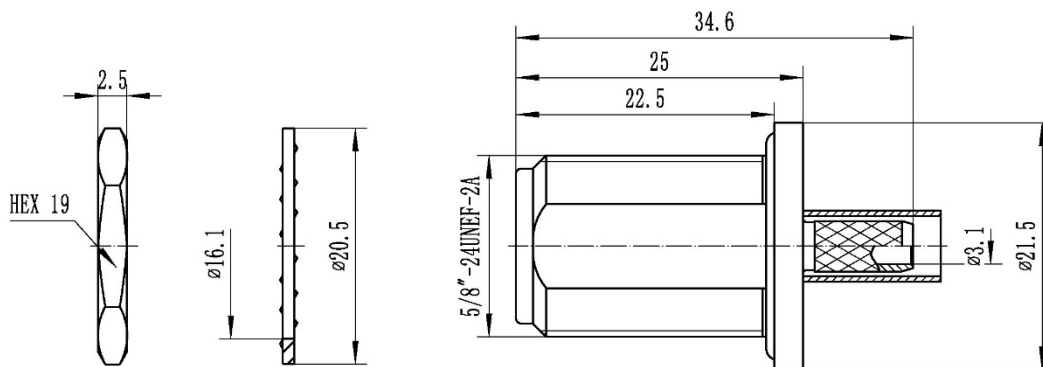
	Materials	Finishes
Connector body, nut	Brass	Nickel plating
Center contact	Bronze	Gold plating
Insulator	PTFE	-
Gasket	Silicon rubber	-

CABLE GROUP:

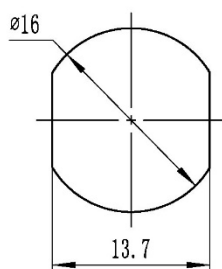
RG142 / RG142A / RG142B / RG223 / RG400 / RG55



Unit: mm



MOUNTING HOLE



CABLE STRIPPING

