

DATASHEET



ELECTRICAL SPECIFICATIONS:

Frequency range	dc – 18 GHz
Impedance	50 Ω
VSWR	≤1.30
Working voltage	335 V _{RMS}
Insulation resistance	5000 MΩ min.
Temperature range	-45 / +125 °C
Lifetime	>500 mating

MATERIAL SPECIFICATIONS:

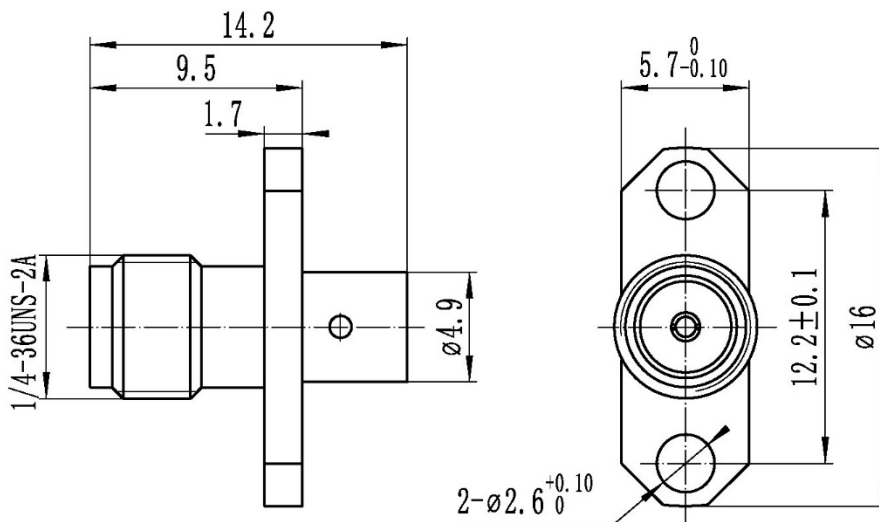
	Materials	Finishes
Connector body	Brass	Gold plating
Center contact	BeCu	Gold plating
Insulator	PTFE	-

CABLE GROUP:

141 SEMI-RIGID / RG402



Unit: mm



Recommended cable stripping dimensions

