

DATASHEET



ELECTRICAL SPECIFICATIONS:

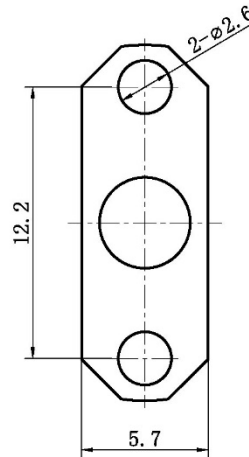
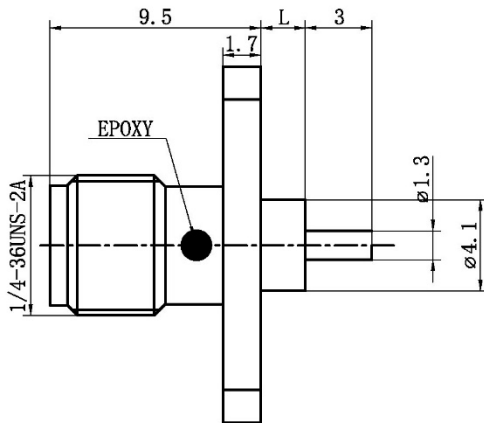
Frequency range	dc – 18 GHz
Impedance	50 Ω
VSWR	≤1.30
Working voltage	335 V _{RMS}
Insulation resistance	5000 MΩ min.
Temperature range	-45 / +125 °C
Life time	>500 mating

MATERIAL SPECIFICATIONS:

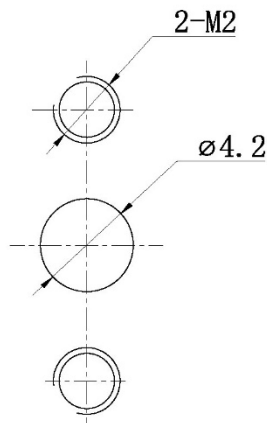
	Materials	Finishes
Connector body	Brass	Gold plating
Center contact	BeCu	Gold plating
Insulator	PTFE	-



Unit: mm



Recommended
Mounting Hole



L	PART NUMBER
2 mm	SMA14-2H-02E
3 mm	SMA14-2H-03E
4 mm	SMA14-2H-04E
5 mm	SMA14-2H-05E
6 mm	SMA14-2H-06E
7 mm	SMA14-2H-07E
8 mm	SMA14-2H-08E
9 mm	SMA14-2H-09E
10 mm	SMA14-2H-10E
11 mm	SMA14-2H-11E
12 mm	SMA14-2H-12E
15 mm	SMA14-2H-15E