



GENERAL COMPONENTS INDUSTRY CORP.

旭誠工業股份有限公司

★ CONFIGURATION & DIMENSIONS :

Fig : A (GDB3308, 3316, 3340) SERIES

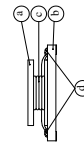
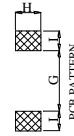
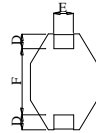
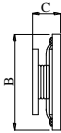
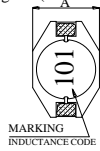


Fig : B (GDB5022) SERIES

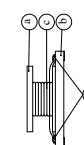
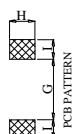
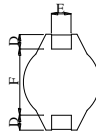
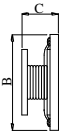
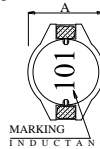


Fig : C (GDB1608) SERIES

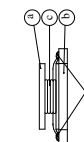
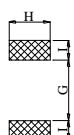
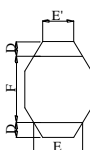
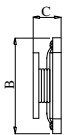
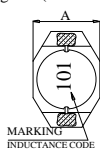
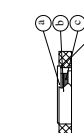
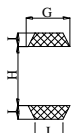
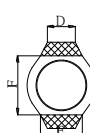
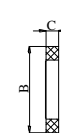
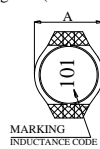


Fig : D (GDB1704)(PDB2506) SERIES



SERIES	A	B	C	D	E	F	G	H	I	Fig
GDB1608	4.45 ^{MAX}	6.60 ^{MAX}	2.92 ^{MAX}	1.02 ^{REF}	3.05 ^{REF}	4.32 ^{REF}	4.06 ^{REF}	3.56 ^{REF}	1.40 ^{REF}	C
GDB1704	5.50 ^{MAX}	6.60 ^{MAX}	1.00 ^{MAX}	2.50±0.2	3.40±0.3	4.90±0.3	3.80 ^{REF}	4.70 ^{REF}	1.10 ^{REF}	D
GDB2506	7.87 ^{MAX}	9.14 ^{MAX}	1.55 ^{MAX}	.	.	7.24 ^{MAX}	5.84 ^{REF}	7.24 ^{REF}	1.21 ^{REF}	D
GDB3308	9.40 ^{MAX}	12.95 ^{MAX}	3.00 ^{MAX}	2.54 ^{REF}	2.54 ^{REF}	7.62 ^{REF}	7.37 ^{REF}	2.79 ^{REF}	2.92 ^{REF}	A
GDB3316	9.40 ^{MAX}	12.95 ^{MAX}	5.21 ^{MAX}	2.54 ^{REF}	2.54 ^{REF}	7.62 ^{REF}	7.37 ^{REF}	2.79 ^{REF}	2.92 ^{REF}	A
GDB3340	9.40 ^{MAX}	12.95 ^{MAX}	11.43 ^{MAX}	2.54 ^{REF}	2.54 ^{REF}	7.62 ^{REF}	7.37 ^{REF}	2.79 ^{REF}	2.92 ^{REF}	A
GDB5022	15.24 ^{MAX}	18.54 ^{MAX}	7.11 ^{MAX}	2.54 ^{REF}	2.54 ^{REF}	12.70 ^{REF}	12.45 ^{REF}	2.79 ^{REF}	2.92 ^{REF}	B

UNIT : m/m

★ MATERIALS :

- a · CORE : FERRITE DR CORE
- b · BASE : PHENOLIC
- c · WIRE : ENAMELLED COPPER WIRE
- d · ADHESIVE : EPOXY RESIN

★ GENERAL SPECIFICATION :

- a · TEMP. RISE 15°C TYP. AT I_{rms} (GDB3316)(GDB1608)
TEMP. RISE 20°C TYP. AT I_{rms} (GDB3340)
TEMP. RISE 30°C TYP. AT I_{rms} (GDB3308)
TEMP. RISE 40°C TYP. AT I_{rms} (GDB5022)(GDB1704)(GDB2506)
- b · RATED CURRENT : ΔL/L_{0A}=10% TYP. AT I_{sat}
- c · OPERATING TEMP. : -40°C ----+85°C
- d · RESISTANCE TO SOLDER HEAT : 260°C .10 SECS.
- e · INDUCTANCE MEASURING FREQUENCY : 100KHZ , 0.1V



GENERAL COMPONENTS INDUSTRY CORP.

旭誠工業股份有限公司

GDB SERIES II

ITEM	RDC (mΩ)						Isat						Irms						SRF (MHZ)									
	MAX.						(A)						(A)						TYP.									
	GDB168	GDB174	GDB256	GDB338	GDB336	GDB334	GDB522	GDB168	GDB174	GDB256	GDB338	GDB336	GDB334	GDB522	GDB168	GDB174	GDB256	GDB338	GDB336	GDB334	GDB522	GDB168	GDB174	GDB256	GDB338	GDB336	GDB334	GDB522
1R0	50				9		9	2.90				9.00		20.00	2.90				6.8		8.60	130.0				100.0		80.0
1R2		80							2.10							1.70							190.0					
1R5	50	100			10			2.60	1.90			8.00			2.80	1.50			6.4			115.0	140.0			90.0		
2R2	70	120			12		14	2.30	1.60			7.00		16.00	2.40	1.40			6.1		7.10	90.0	115.0			80.0		80.0
3R3	80	160			15		18	2.00	1.30			6.40		14.00	2.00	1.20			5.4		6.20	70.0	90.0			65.0		60.0
4R7	90	200	145		18			1.50	1.10	1.60		5.40			1.50	1.10	1.90		4.8			50.0	88.0	90.0		45.0		
5R6							20							12.00								5.30						40.0
6R8	130	320	165		27			1.20	0.90	1.30		4.60			1.40	0.85	1.70		4.4			45.0	66.0	75.0		38.0		
100	160	410	240	110	38	40	31	1.10	0.80	1.00	2.40	3.80	8.00	10.00	1.10	0.75	1.50	2.00	3.9	3.5	4.30	35.0	55.0	60.0	35.0	30.0	22.0	30.0
150	230	550	300	150	46	50	36	0.90	0.65	0.90	2.00	3.00	7.00	8.00	1.20	0.60	1.30	1.50	3.1	3.0	4.00	30.0	42.0	45.0	33.0	27.0	18.0	22.0
220	370	850	420	230	85	66	47	0.70	0.50	0.70	1.60	2.60	5.50	7.00	0.80	0.52	1.00	1.30	2.7	2.5	3.50	20.0	38.0	35.0	25.0	19.0	11.0	20.0
330	510	1300	550	300	100	80	66	0.58	0.40	0.60	1.40	2.00	4.00	5.50	0.60	0.42	0.90	1.10	2.1	2.0	3.00	15.0	29.0	30.0	19.0	15.0	9.0	15.0
470	640	1800	765	390	140	110	86	0.50	0.35	0.50	1.00	1.60	3.80	4.50	0.50	0.36	0.70	0.80	1.8	1.6	2.60	14.0	22.0	22.0	14.0	12.0	8.0	9.0
680	860	2500	1100	660	200	170	130	0.40	0.30	0.40	0.90	1.40	3.00	3.50	0.40	0.30	0.60	0.70	1.5	1.2	2.30	11.0	18.0	20.0	12.0	10.0	7.0	8.0
101	1270	3500	1600	840	280	220	190	0.31	0.25	0.30	0.70	1.20	2.50	3.00	0.30	0.26	0.50	0.60	1.3	1.2	1.80	9.0	14.0	15.0	10.0	9.0	5.0	7.0
151	2000	5000	2500	1200	400	340	250	0.27	0.18	0.25	0.60	1.00	2.00	2.60	0.25	0.21	0.40	0.50	1.0	0.9	1.50	6.0	12.0	12.0	8.0	6.0	4.0	6.0
221	3110	7000	3650	1900	610	440	380	0.22	0.16	0.22	0.50	0.80	1.60	2.40	0.20	0.18	0.32	0.40	0.8	0.7	1.20	5.5	10.0	10.0	6.0	5.0	3.5	5.0
331	3800	15000	4650	2700	1020	700	560	0.18	0.13	0.18	0.40	0.60	1.20	1.90	0.16	0.13	0.28	0.30	0.6	0.6	1.00	5.0	8.0	8.0	5.0	4.5	2.5	4.0
471	5060		6750	4000	1270	950	850	0.16		0.14	0.30	0.50	1.00	1.40	0.15		0.24	0.20	0.5	0.3	0.82	4.0		6.5	4.0	3.5	2.0	3.0
681	9200		9150	5300	2020	1200	1100	0.14		0.12	0.20	0.40	1.00	1.20	0.12		0.20	0.10	0.4	0.2	0.72	3.0		5.5	3.0	2.5	2.0	2.5
102	13800		14200	8400	3000	2000	1800	0.10		0.10	0.10	0.30	0.80	1.00	0.07		0.16	0.05	0.3	0.1	0.56	2.0		4.5	2.5	2.0	1.5	2.0

INDUCTANCE TOLERANCE: GDB1608 1R0~102:M:±20%

GDB1704 1R2~331:M:±20%

GDB2506 4R7~102:M:±20%

GDB3308 100~102:M:±20%

GDB3316 1R0~102:M:±20%

GDB3340 100~102:M:±20%

GDB5022 1R0~102:M:±20%