

**DATASHEET**



**ELECTRICAL SPECIFICATIONS:**

Frequency range	dc – 12.4 GHz
Impedance	50 Ω
Voltage rating	335 V RMS
Insulation resistance	5000 MΩ min.
Temperature range	-55 / +155 °C
Life time	500 mating

**MATERIAL SPECIFICATIONS:**

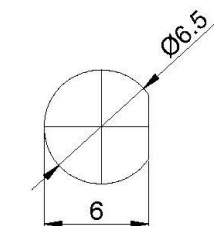
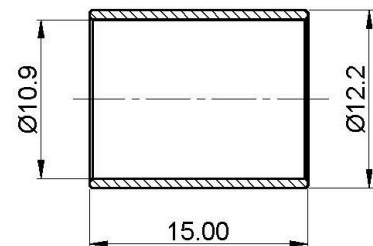
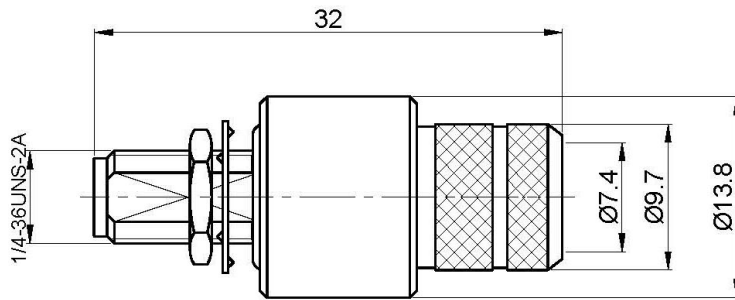
	Materials	Finishes
Connector body	Brass	Nickel plated
Center contact	Brass	Gold plated
Insulator	PTFE	-
Nut + Washer	Brass	Nickel plated

**CABLE GROUP:**

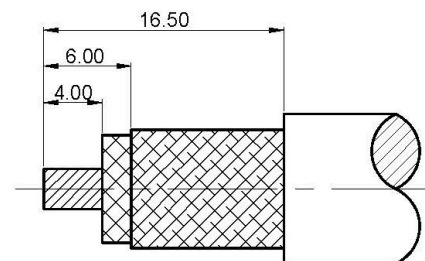
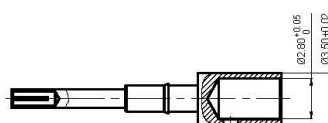
LMR400



unit: mm



RECOMMENDED MOUNTING HOLE



STRIPPING CABLE