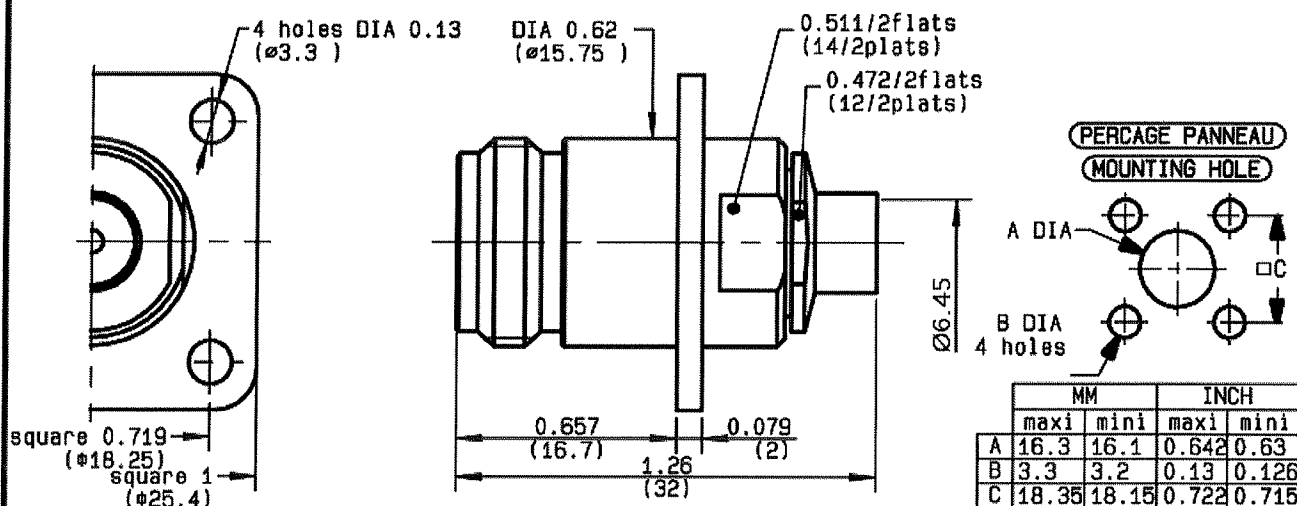


**STRAIGHT SQUARE FLANGE JACK  
CLAMP TYPE - CABLE .250**

**R161.278.300**  
**SERIES N**



NOMINAL IMPEDANCE	<b>50</b> Ω
FREQUENCY RANGE	<b>0-11</b> GHz
TEMPERATURE RATING	<b>-55/+105</b> °C
V.S.W.R	<b>1.15</b> + x F(GHz)Maxi
RF INSERTION LOSS	<b>0.048</b> √F(GHz) dB Maxi
VOLTAGE RATING	<b>1400</b> Veff Maxi
DIELECTRIC WITHSTANDING VOLTAGE	<b>2500</b> Veff Mini
INSULATION RESISTANCE	<b>5000</b> MΩMini
HERMETIC SEAL	<b>NA</b> Atm.cm <sup>3</sup> /s
LEAKAGE (pressurized only)	<b>NA</b>
MECHANICAL DURABILITY	<b>500</b> Cycles
WEIGHT	<b>35.9</b> gr
SPECIFICATION	

CABLES : **KS 3**  
**RB 401**

OTHERS CHARACTERISTICS

CABLE RETENTION	<b>500</b> N Mini
CENTER CONTACT RETENTION	
Axial force - mating end	<b>NA</b> N Mini
Axial force - opposite end	<b>NA</b> N Mini
Torque	<b>NA</b> cm.N Mini
RECOMMENDED TORQUES	
Mating	<b>NA</b> cm.N
Panel nut	<b>NA</b> cm.N
Clamp nut	<b>150</b> cm.N

CONNECTOR PARTS:	MATERIALS	FINISH	(all values are given in micrometers)
BODY	BRASS	BBR 2	
OUTER CONTACT			
CENTER CONTACT	BERYLLIUM COPPER	GOLD 0.5 OVER NICKEL 2	
INSULATOR	PTFE	-	
GASKET		-	
OTHERS PIECES	BRASS	GOLD 0.2 OVER NICKEL 2	

ISSUE	CREATION DATE	FILE PART-NUMBER
<b>1326 A01</b>	<b>09/04/1997</b>	<b>EPC 96-07</b>



QUERIN

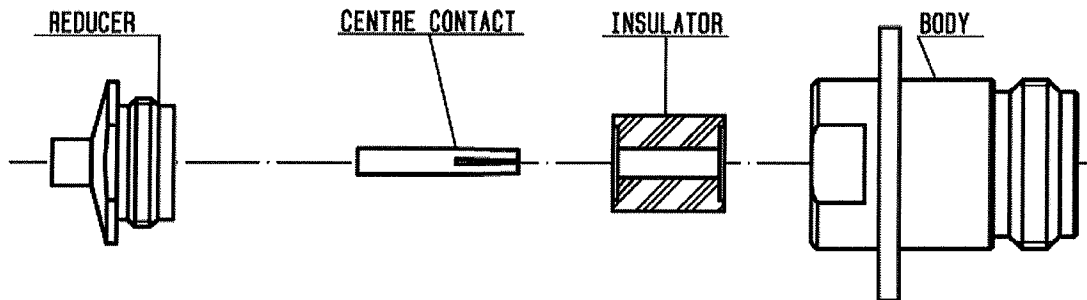
The information given here is subject to change without notice.  
Design changes may be in order to improve the product.

*Connect to the future*



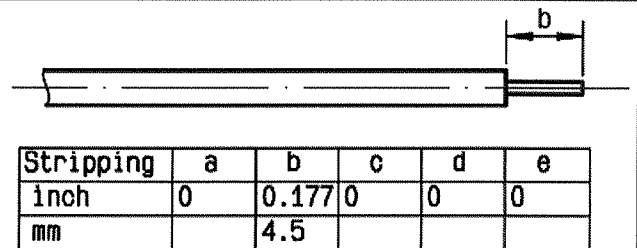
**R161.278.300**

ISSUE **1326A01** SERIES **N**



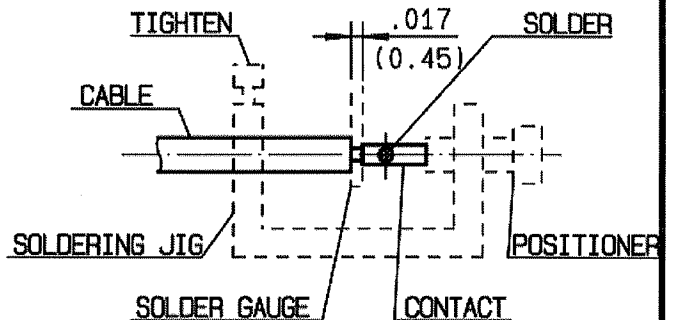
①

Take the tool kit : R 282 125 010 .  
Strip the dielectric of the cable .  
Stripping tool cable : R 282 054 .  
Trimmer : R 282 074 020 .  
Clean the cable .



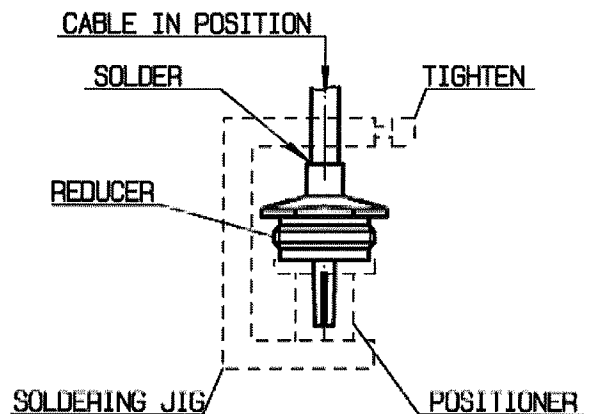
②

Screw the positioner R282 744 260 onto the soldering jig R 282 740 030 .  
Slide contact into positioner .  
Insert solder gauge R 282 862 080 between contact and cable .  
Tighten and solder the contact .



③

After cooling remove cable assembly from the jig .  
Put positioner R282 744 330 on the soldering jig .  
Slide cable into the reducer until it bottoms against positioner R282 744 330 .  
Tighten .  
Put 3 rings of solder around the cable and solder .



④

After cooling remove cable assembly from the jig .  
Slide insulator into the centre contact .  
Screw sub-assembly into the connector body .  
( recommended coupling torque 13.27 in.lb )

