

## right angle plugs

- > cable entry clamp
- > centre contact soldered

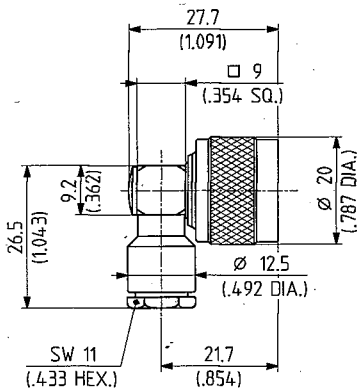


Fig. 1

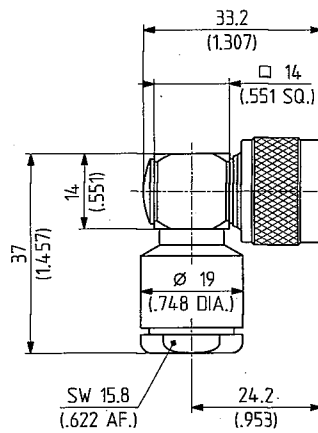
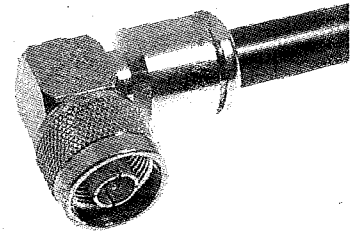


Fig. 2



SUHNER TYPE	Ident. no.	Cable group (example)	Assembly instruction	Weight	Fig.	Notes
16 N-50-3-103	• 651610	U7,10 (RG58C/U)	27060	37.0 g / 1.30 oz.	1	
16 N-50-7-26	• 650825	U28 (RG 213/U)	3003	65.0 g / 2.28 oz.	2	

- > cable entry crimp
- > centre contact soldered
- > taper sleeves see page 423

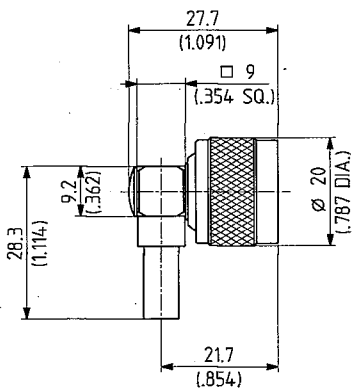


Fig. 1

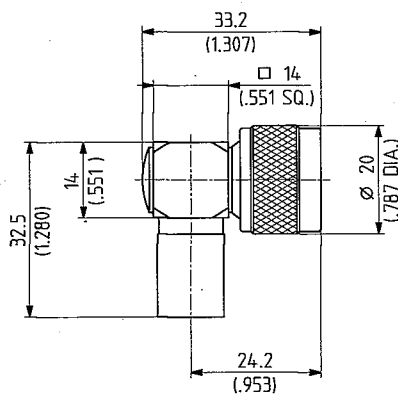
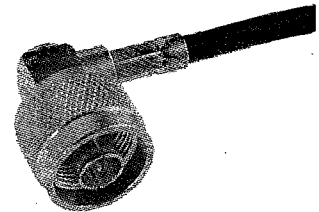


Fig. 2



SUHNER TYPE	Ident. no.	Cable group (example)	Crimp insert	Assembly instruction	Weight	Fig.	Notes
16 N-50-3-26	• 642846	U7 (RG 58 C/U)	B	3058	27.0 g / 0.95 oz.	1	
16 N-50-3-27	• 642847	U9 (RG 223/U)	B	3058	27.0 g / 0.95 oz.	1	
16 N-50-7-30	• 642848	U29 (RG 213/U)	D	3076	42.0 g / 1.47 oz.	2	
16 N-50-7-31	• 642849	U32 (RG 214/U)	D	3076	42.0 g / 1.47 oz.	2	

- centre contact captivated

cable groups see page 36

assembly tools see page 403

mounting holes see page 441