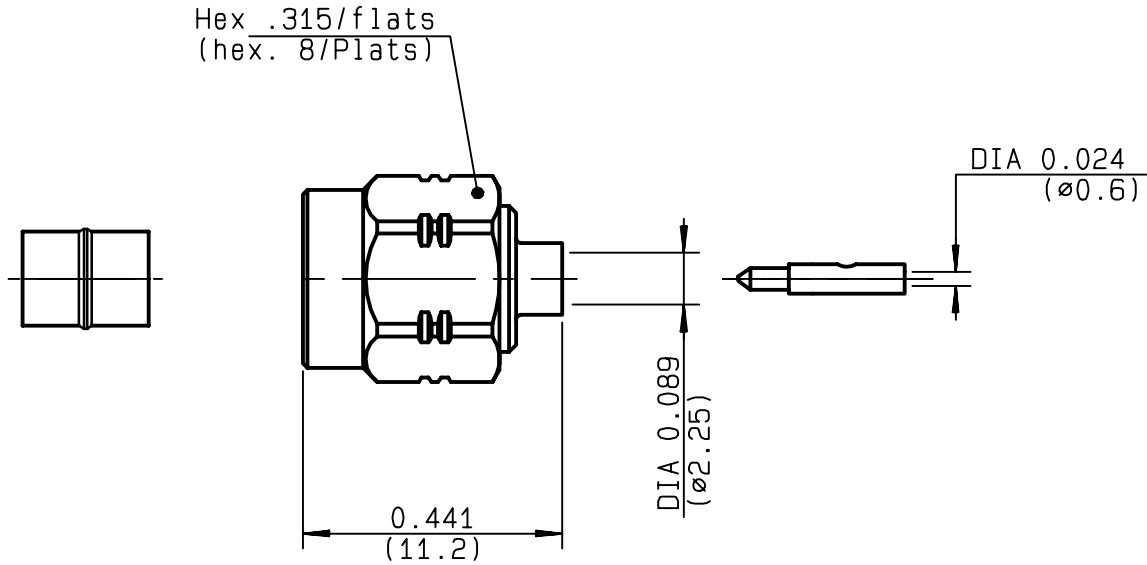


**STRAIGHT PLUG SOLDER TYPE
CABLE .085**

R124.052.003
SERIES SMA-COM



| | |
|---------------------------------|---------------------------------------|
| NOMINAL IMPEDANCE | 50 Ω |
| FREQUENCY RANGE | 0-18 GHz |
| TEMPERATURE RATING | -65/+105 °C |
| V.S.W.R | 1.07 + .01 x F(GHz)Maxi |
| RF INSERTION LOSS | 0.05 √F(GHz) dB Maxi |
| VOLTAGE RATING | 335 Veff Maxi |
| DIELECTRIC WITHSTANDING VOLTAGE | 750 Veff Mini |
| INSULATION RESISTANCE | 5000 MΩMini |
| HERMETIC SEAL | NA Atm.cm ³ /s |
| LEAKAGE (pressurized only) | NA |
| MECHANICAL DURABILITY | 100 Cycles |
| WEIGHT | 2.25 gr |
| SPECIFICATION | |

| | |
|---------------------------------------|---------------------|
| CABLES : KS 1 RG 405 | |
| OTHERS CHARACTERISTICS | |
| CABLE RETENTION | 130 N Mini |
| CENTER CONTACT RETENTION | |
| Axial force - mating end | NA N Mini |
| Axial force - opposite end | NA N Mini |
| Torque | NA cm.N Mini |
| RECOMMENDED TORQUES | |
| Mating | 60 cm.N |
| Panel nut | NA cm.N |
| Clamp nut | NA cm.N |

| CONNECTOR PARTS | MATERIALS | FINISH |
|-----------------|-----------------|--------------------------|
| BODY | STAINLESS STEEL | GOLD 0.2 OVER NICKEL 2 |
| OUTER CONTACT | | |
| CENTER CONTACT | BRASS | GOLD 1.3 OVER COPPER 2.5 |
| INSULATOR | PTFE | - |
| GASKET | SILICONE RUBBER | - |
| OTHERS PIECES | BRASS | GOLD 0.2 OVER NICKEL 2 |

(all values are given in micrometers)

TRIQUES

| | | |
|----------------|-------------------|--------------------|
| ISSUE | CREATION DATE | FILE PART-NUMBER |
| 9910B00 | 12/11/1996 | 96-1200-062 |



RADIALL®

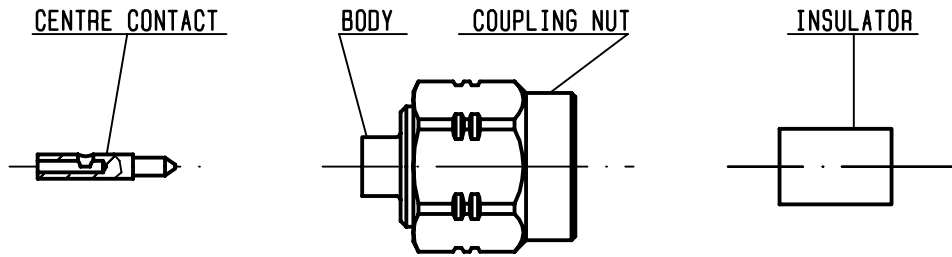
The information given here is subject to change without notice.
Design changes may be in order to improve the product.

Connect to the future



R124.052.003

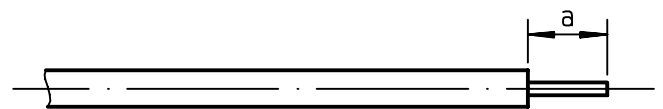
ISSUE **9910B00** SERIES **SMA-COM**



We recommend a cable thermal preconditioning before assembling

①

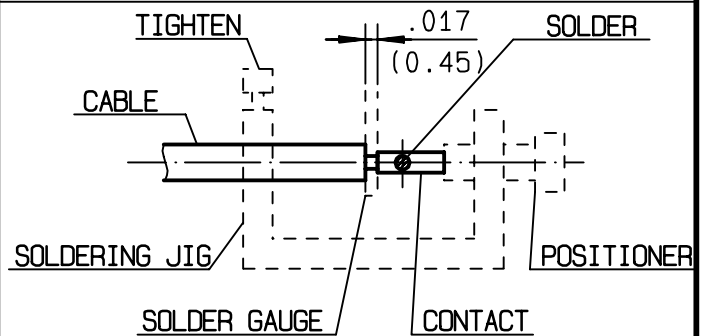
Strip the dielectric of the cable .
 Stripping tool cable : R 282 051 000.
 Trimmer : R 282 063 000 .
 Clean the cable .
 -



| Stripping | a | b | c | d | e |
|-----------|---------|---|---|---|---|
| inch | 0.125 0 | 0 | 0 | 0 | 0 |
| mm | 3.17 | | | | |

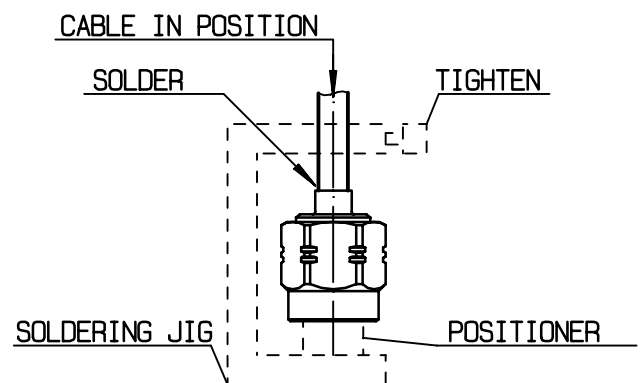
②

Screw the positioner R 282 744 220 onto the soldering jig R 282 740 000 .
 Slide contact into positioner .
 Insert solder gauge R 282 862 060 (61) between contact and cable .
 Tighten and solder the contact .



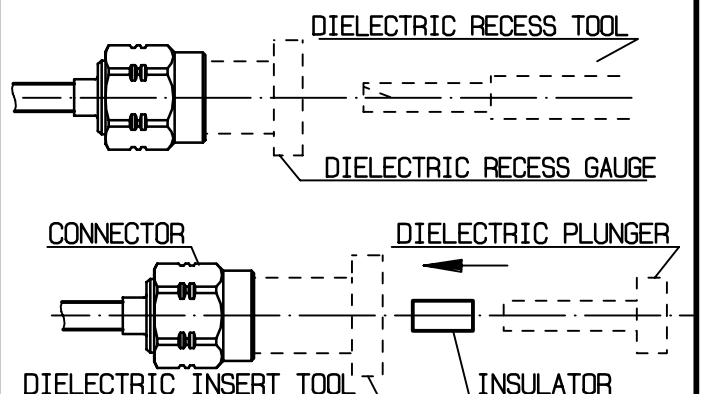
③

After cooling remove cable assembly from the jig .
 Screw positioner R 282 744 060 (85) into the connector .
 Slide cable into the connector until it bottoms againsts positioner .
 Tighten .
 Put 3 rings of solder around the cable and solder .



④

After cooling remove cable assembly from the jig .
 Screw dielectric recess gauge R282 914 000(93) and trim dielectric with the dielectric recess tool R 282 915 010.
 Screw female dielectric insert tool onto connector and insert insulator with the dielectric plunger R 282 730 040 .



TRIQUES