

DATASHEET



ELECTRICAL SPECIFICATIONS:

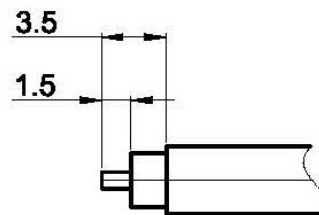
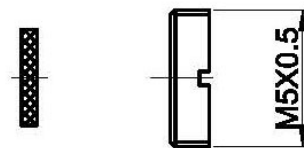
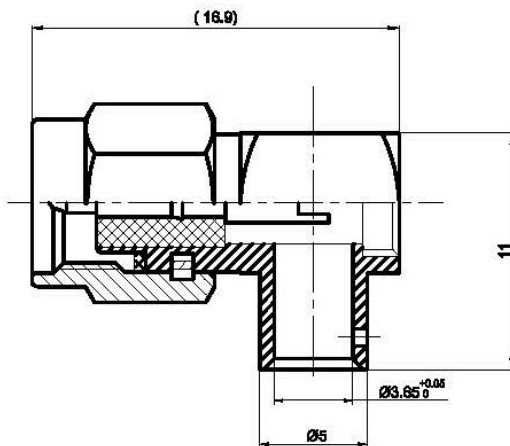
Frequency range	dc – 10 GHz
Impedance	50 Ω
Voltage rating	335 V RMS
Insulation resistance	5000 MΩ min.
Temperature range	-65 / +165 °C
Life time	500 mating

MATERIAL SPECIFICATIONS:

	Materials	Finishes
Connector body	Brass	Gold flash
Center contact	Brass	Gold flash
Insulator	PTFE	-

CABLE GROUP:

141 SEMI-RIGID / RG402



STRIPPING CABLE