

**DATASHEET**



**ELECTRICAL SPECIFICATIONS:**

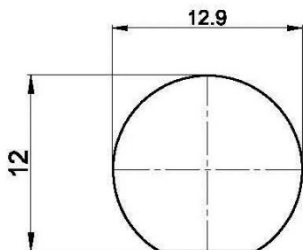
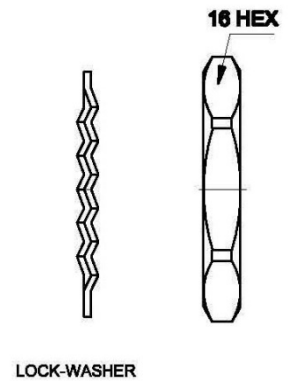
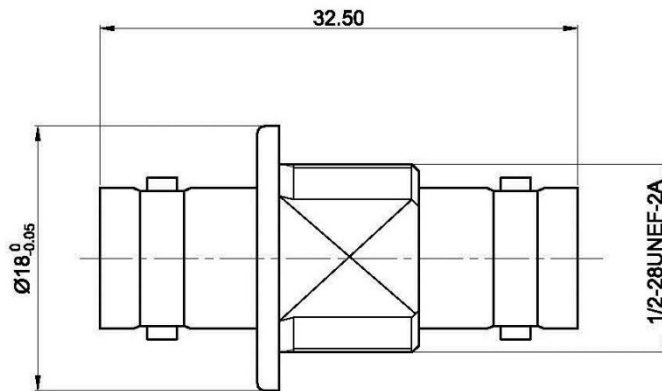
Frequency range	dc – 4 GHz
Impedance	50 Ω
Voltage rating	500 Vrms
Insulation Resistance	5000 MΩ
Temperature range	-65 / +165 °C
Mating	500

**MATERIAL SPECIFICATIONS:**

	Material	Finishing
Connector body, Nut	Brass	Nickel plating
Center contact	BeCu	Gold plating
Insulator	PTFE	-



Unit: mm



**RECOMMENDED  
MOUNTING HOLE**