

# Coaxial Frequency Mixer

Level 17 (LO Power +17 dBm) 5 to 1000 MHz

ZFM-2H+  
ZFM-2H



SMA version shown  
CASE STYLE: K18

## Maximum Ratings

Operating Temperature	-55°C to 100°C
Storage Temperature	-55°C to 100°C
RF Power	200mW
IF Current	40mA

Permanent damage may occur if any of these limits are exceeded.

## Coaxial Connections

LO	1
RF	2
IF	3

## Features

- low conversion loss, 6.12 dB typ.
- good L-R isolation, 40 dB typ, L-I, 35 dB typ.
- rugged shielded case

## Applications

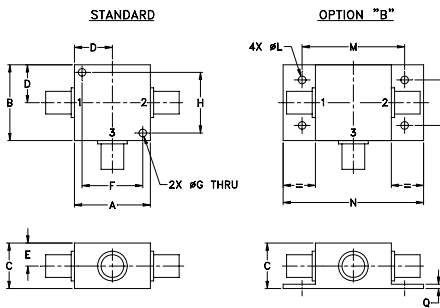
- VHF/UHF
- cellular
- instrumentation

Connectors	Model
BNC	ZFM-2H (+)
SMA	ZFM-2H-S (+)
BRACKET (OPTION "B")	

+ RoHS compliant in accordance with EU Directive (2002/95/EC)

The +Suffix identifies RoHS Compliance. See our web site for RoHS Compliance methodologies and qualifications.

## Outline Drawing



## Outline Dimensions (inch/mm)

A	B	C	D	E	F	G	H
1.25	1.25	.75	.63	.38	1.00	.125	1.000
31.75	31.75	19.05	16.00	9.65	25.40	3.18	25.40
J	K	L	M	N	P	Q	wt
--	--	.125	1.688	2.18	.75	.07	grams
--	--	3.18	42.88	55.37	19.05	1.78	70.0

## Electrical Specifications

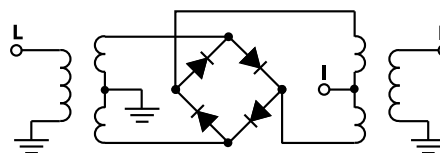
FREQUENCY (MHz)		CONVERSION LOSS (dB)				LO-RF ISOLATION (dB)			LO-IF ISOLATION (dB)								
LO/RF	IF	Mid-Band m		Total Range	L M U			L M U									
$f_L-f_U$		$\bar{X}$	$\sigma$	Max.	Typ.	Min.	Typ.	Min.	Typ.	Min.	Typ.	Min.					
5-1000	DC-1000	6.12	0.12	7.0	10.0	50	40	40	30	30	20	45	40	35	25	25	17

1 dB COMP.: +14 dBm typ. L = low range [ $f_L$  to  $10 f_L$ ] M = mid range [ $10 f_L$  to  $f_U/2$ ] U = upper range [ $f_U/2$  to  $f_U$ ]  
m = mid band [ $2f_L$  to  $f_U/2$ ]

## Typical Performance Data

Frequency (MHz)		Conversion Loss (dB)	Isolation L-R (dB)	Isolation L-I (dB)	VSWR RF Port (:1)	VSWR LO Port (:1)
RF	LO	LO +17dBm	LO +17dBm	LO +17dBm	LO +17dBm	LO +17dBm
5.00	35.00	5.75	73.03	64.57	1.24	1.51
35.15	65.15	5.75	53.95	50.91	1.10	1.53
65.30	95.30	5.78	47.75	44.94	1.10	1.52
125.61	95.61	5.83	45.94	42.85	1.09	1.44
185.91	155.91	5.88	41.73	38.74	1.09	1.43
216.06	186.06	5.87	40.07	37.26	1.10	1.39
276.37	246.37	5.70	37.49	34.59	1.11	1.38
336.67	306.67	5.62	35.70	32.97	1.11	1.40
396.98	366.98	5.78	35.50	32.29	1.12	1.37
457.28	427.28	6.15	33.92	30.55	1.13	1.36
517.58	487.58	5.88	34.70	29.07	1.15	1.37
547.74	517.74	5.91	35.38	29.45	1.15	1.39
608.04	578.04	6.36	34.75	28.29	1.16	1.38
668.34	638.34	6.50	34.53	27.06	1.17	1.38
728.65	698.65	6.30	33.69	25.41	1.20	1.36
788.95	758.95	6.43	32.39	25.21	1.22	1.45
849.26	819.26	7.56	32.23	24.28	1.26	1.49
909.56	879.56	8.59	32.46	23.91	1.34	1.52
969.86	939.86	8.55	32.66	24.30	1.46	1.54
1000.00	970.00	8.57	32.20	24.05	1.62	1.53

## Electrical Schematic



**Mini-Circuits**  
ISO 9001 ISO 14001 AS 9100 CERTIFIED

P.O. Box 350166, Brooklyn, New York 11235-0003 (718) 934-4500 Fax (718) 332-4661 The Design Engineers Search Engine Provides ACTUAL Data Instantly at [minicircuits.com](http://minicircuits.com)

IF/RF MICROWAVE COMPONENTS

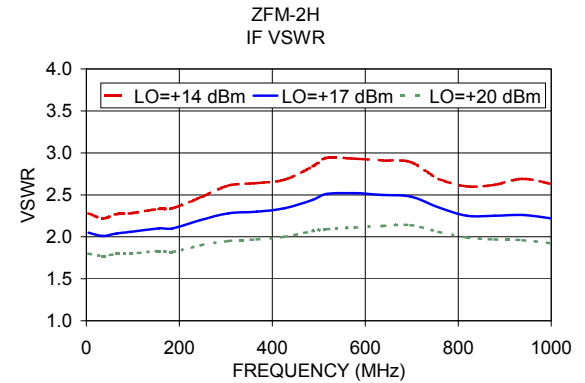
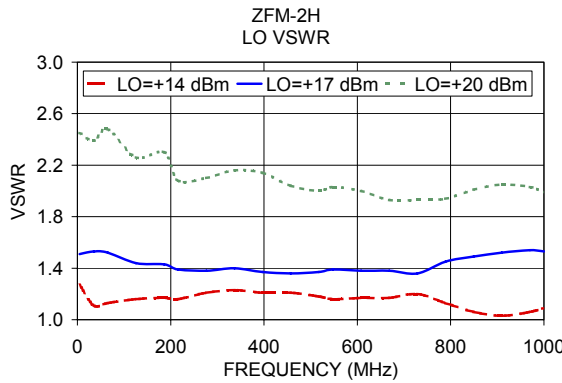
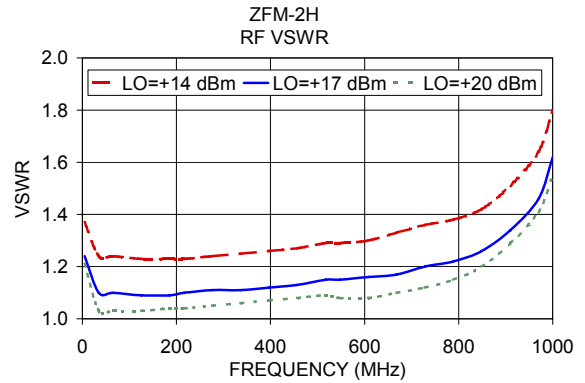
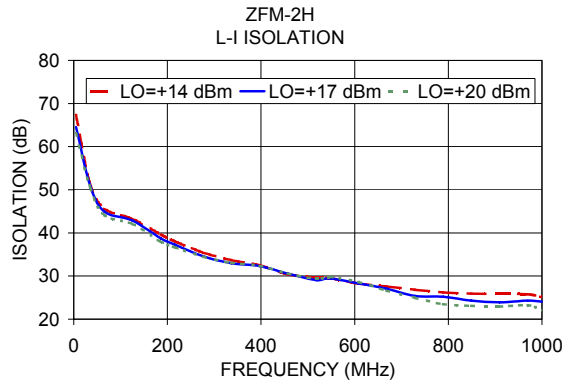
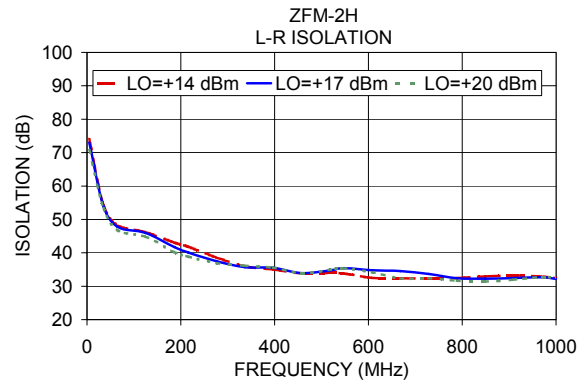
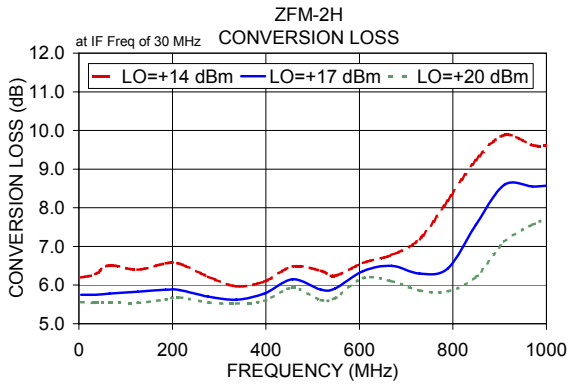
For detailed performance specs & shopping online see web site

Notes: 1. Performance and quality attributes and conditions not expressly stated in this specification sheet are intended to be excluded and do not form a part of this specification sheet. 2. Electrical specifications and performance data contained herein are based on Mini-Circuit's applicable established test performance criteria and measurement instructions. 3. The parts covered by this specification sheet are subject to Mini-Circuit's standard limited warranty and terms and conditions (collectively, "Standard Terms"); Purchasers of this part are entitled to the rights and benefits contained therein. For a full statement of the Standard Terms and the exclusive rights and remedies thereunder, please visit Mini-Circuit's website at [www.minicircuits.com/MCLStore/terms.jsp](http://www.minicircuits.com/MCLStore/terms.jsp).

REV. A  
M98898  
ZFM-2H+  
DJ/TD/CP  
120306  
Page 1 of 2

# Performance Charts

# ZFM-2H+ ZFM-2H



For detailed performance specs & shopping online see web site

P.O. Box 350166, Brooklyn, New York 11235-0003 (718) 934-4500 Fax (718) 332-4661 The Design Engineers Search Engine Provides ACTUAL Data Instantly at [minicircuits.com](http://minicircuits.com)

IF/RF MICROWAVE COMPONENTS

**Notes:** 1. Performance and quality attributes and conditions not expressly stated in this specification sheet are intended to be excluded and do not form a part of this specification sheet. 2. Electrical specifications and performance data contained herein are based on Mini-Circuit's applicable established test performance criteria and measurement instructions. 3. The parts covered by this specification sheet are subject to Mini-Circuits standard limited warranty and terms and conditions (collectively, "Standard Terms"); Purchasers of this part are entitled to the rights and benefits contained therein. For a full statement of the Standard Terms and the exclusive rights and remedies thereunder, please visit Mini-Circuits' website at [www.minicircuits.com/MCLStore/terms.jsp](http://www.minicircuits.com/MCLStore/terms.jsp).