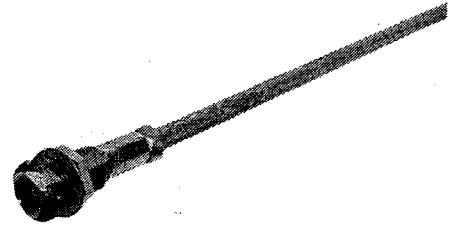
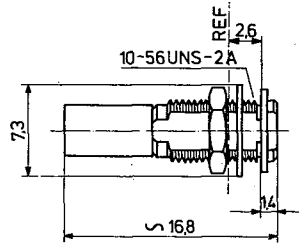


## bulkhead jacks

for flexible cables

SUHNER full crimp  
taper sleeves  
see page 262



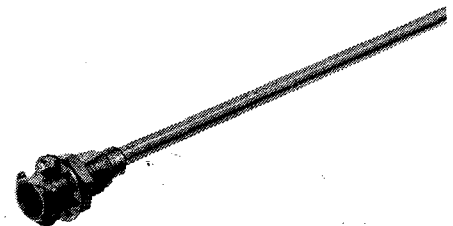
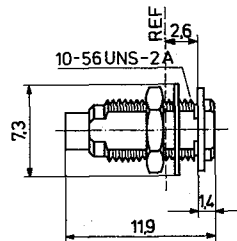
SUHNER TYPE	Ident. no.	CECC 22 221-	VSWR group	Cable group (example)	Weight	Al	Inner conductor	Notes
24 MCX-50-1-10	543579		II	U1 (RG 178 B/U)	1.50 g	3097	non-captivated	
24 MCX-50-2-10c	543581	812-02	I	U2 (RG 316/U)	1.40 g	3097	captivated	
24 MCX-50-2-11c	543582	812-03	I	U4 (K02252 D)	1.40 g	3097	captivated	

crimp insert 1A  
panel thickness 5 mm max.

mounting hole ML 11  
rear or front mounting

for semi-rigid cables

soldered



SUHNER TYPE	Ident. no.	CECC 22 221-	VSWR group	Cable groups (example)	Weight	Al	Inner conductor	Notes
24 MCX-50-1-3	641648	803-01	II	Y2 (EZ 47)	1.10 g	3100	non-captivated	
24 MCX-50-2-3	543580	803-02	I	Y3, Y11 (EZ 86)	1.10 g	3100	non-captivated	

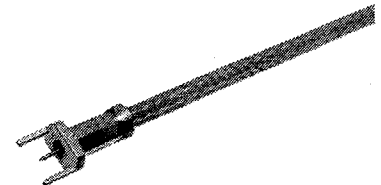
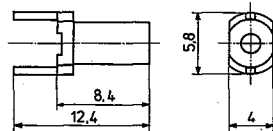
panel thickness 5 mm max.

mounting hole ML 11  
rear or front mounting

## PCB cable terminators

for flexible cables

crimp



SUHNER TYPE	Ident. no.	Cable group (example)	Mounting hole	Crimp insert	Weight	Al	Notes
83 MCX-0-1-5	640875	U1 (RG 178 B/U)	ML 45	A	0.80 g	3099	
83 MCX-0-2-5	640799	U2 (RG 316/U)	ML 45	A	0.70 g	3099	
83 MCX-0-2-6	641650	U4 (K02252 D)	ML 45	A	0.70 g	3099	

VSWR groups see page 29  
Al = assembly instruction  
cable groups see page 17

mounting holes see page 269  
assembly tools see page 251