

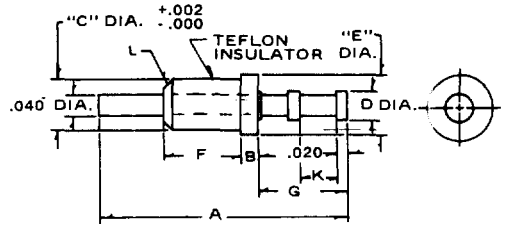


Mil-T-55155 Insulated Terminals

Teflon

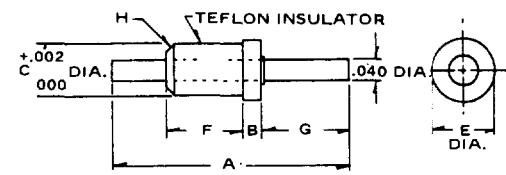
LTR.	A	B	C	D	E	F	G	K	L	DWV VAC
A	.500	.040	.148	.080	.172	.100	.210	.100	.015x45°	1500
B	.836	.125	.148	.093	.172	.230	.250	.093	.031x45°	3000
C	.500	.040	.093	.080	.125	.100	.210	.100	.015x45°	1300

MIL-T-55155/4-1, 2 & 3 PART NO. 4500



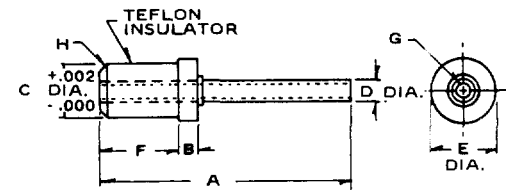
LTR.	A	B	C	E	F	G	H	DWV VAC
A	.375	.040	.148	.172	.100	.125	.015x45°	2000
B	.515	.040	.148	.172	.100	.210	.015x45°	2000
C	.675	.125	.165	.187	.150	.200	.031x45°	2500
D	.515	.040	.093	.125	.100	.210	.015x45°	1500
E	.343	.040	.093	.125	.100	.125	.015x45°	1500

MIL-T-55155/3-1, 2, 3, 4 & 5 PART NO. 4501



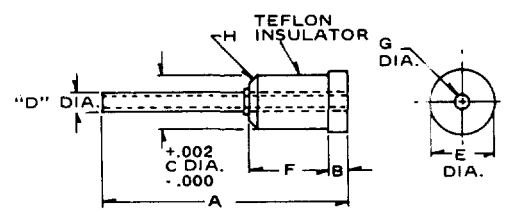
LTR.	A	B	C	D	E	F	G	H	DWV VAC
A	.225	.040	.093	.040	.125	.060	.030	.010x45°	1500
B	.310	.040	.120	.040	.130	.053	.030	.015x45°	1500
C	.367	.050	.148	.085	.172	.110	.063	.015x45°	1500

MIL-T-55155/5-1, 2, & 3 PART NO. 4502



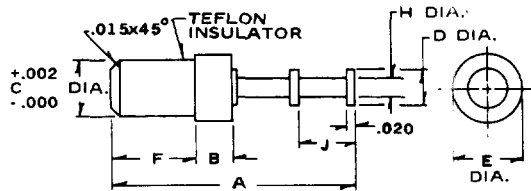
LTR.	A	B	C	D	E	F	G	H	DWV VAC
A	.193	.025	.125	.050	.150	.063	.030	.015x45°	1500
B	.367	.050	.148	.085	.172	.110	.063	.015x45°	1500

MIL-T-55155/6-1, & 2 PART NO. 4503



LTR.	A	B	C	D	E	F	H	J	DWV VAC
A	.359	.040	.148	.080	.172	.110	.040	.120	1500
B	.421	.125	.165	.093	.187	.150	.045	.068	2500
C	.350	.040	.093	.080	.125	.100	.040	.120	1500

MIL-T-55155/7-1, 2, & 3 PART NO. 4504



Standard Plating Suffix to Part Number
See Page 93 for all plating options.

Terminal
-4 (Sb over Cu)

TOLERANCE: .xxx ±.015 (ALL DIMS. BEFORE PLATING)



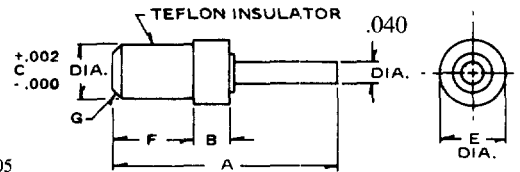
Mil-T-55155 Insulated Terminals

Teflon

LTR.	A	B	C	E	F	G	DWV VAC
A	.350	.040	.148	.172	.100	.015x45°	1500
B	.350	.040	.093	.125	.100	.015x45°	1500

MIL-T-55155/8-1 & 2

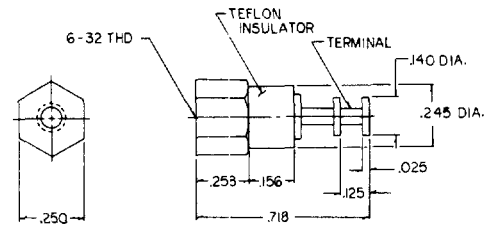
PART NO. 4505



D.W.V. at Sea Level 3,300 VAC

MIL-T-55155/10-2

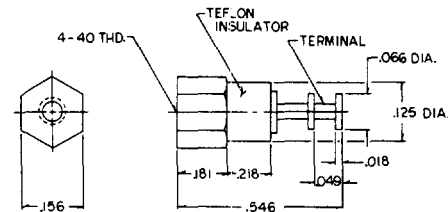
PART NO. 4579



D.W.V. at Sea Level 3,500 VAC

MIL-T-55155/10-1

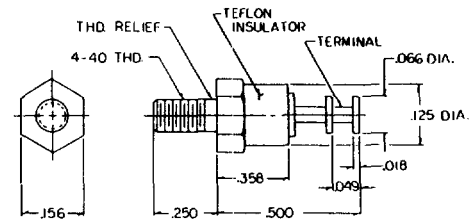
PART NO. 4580



D.W.V. at Sea Level 3,500 VAC

MIL-T-55155/9-1

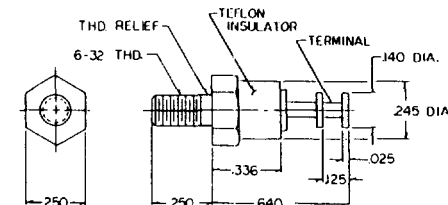
PART NO. 4582



D.W.V. at Sea Level 3,300 VAC

MIL-T-55155/9-2

PART NO. 4581



Standard Plating Suffix to Part Number

See Page 93 for all plating options.

Terminal

-4 (Sb over Cu)

Base

-12 (Ni over Cu)

TOLERANCE: .xxx ±.015 (ALL DIMS. BEFORE PLATING)