

# TV and VTR – Prescalers

## 2 GHz prescaler

Scaling factor	Type	$f_{max}$ GHz	$I_{Smax}$ mA	$T_{amb}$ °C	Case	Pinning Fig. No
÷ 2	U 862 BS	2.4	48	70	TO 50	1
	U 2620 B	2.0	36	70	X-Ceramic	
÷ 4	U 864 BS	2.4	54	70	TO 50	2
	U 4620 B	2.0	42	70	X-Ceramic	
Supply voltage range				$V_S$	4.75 ... 5.5	V
Input sensitivity				$V_i$	100	mV
Large signal compatibility				$V_{imax}$	300	mV
Output voltage measured with $R_L \geq 10 \text{ k}\Omega$				$V_o$	200	mV <sub>PD</sub>

### Features:

- Low power consumption
- Few external components
- High decoupling between input and output
- Complement to a full prescaler system by addition of a ÷ 64, ÷ 128 or ÷ 256 prescaler

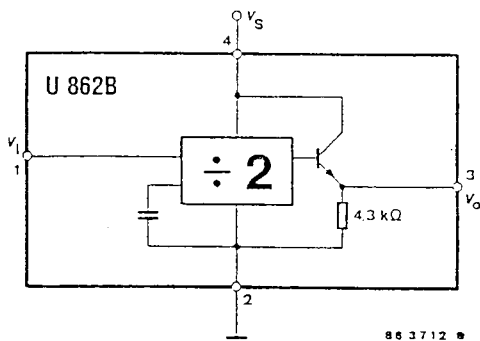
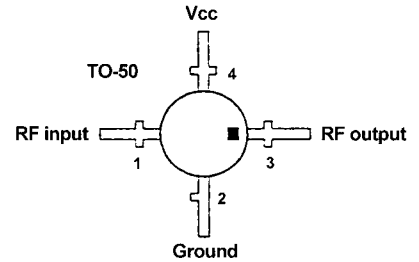


Fig. 1

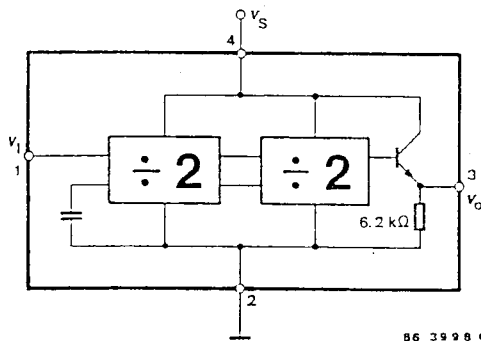


Fig. 2

