

Surface Mount Frequency Mixer

RMS-1H+ RMS-1H

Level 17 (LO Power +17 dBm) 2 to 500 MHz



CASE STYLE: TT240

Maximum Ratings

Operating Temperature	-40°C to 85°C
Storage Temperature	-55°C to 100°C
RF Power	200mW
IF Current	40mA

Pin Connections

LO	1
RF	4
IF	5
GROUND	2,3,6

Features

- excellent L-R isolation, 44 dB typ.
- conversion loss, 6.25 dB typ.
- small size, 0.25"x0.31"x0.2"

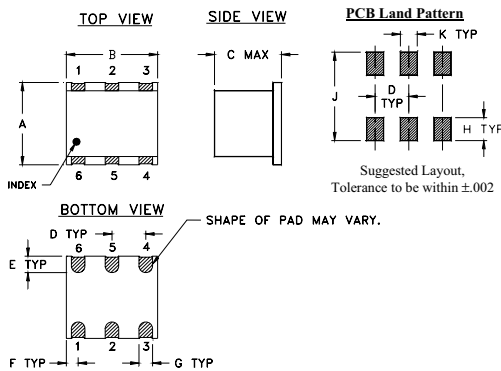
Applications

- HF & VHF communications
- intermediate frequency for downconverters

+ RoHS compliant in accordance with EU Directive (2002/95/EC)

The +Suffix identifies RoHS Compliance. See our web site for RoHS Compliance methodologies and qualifications.

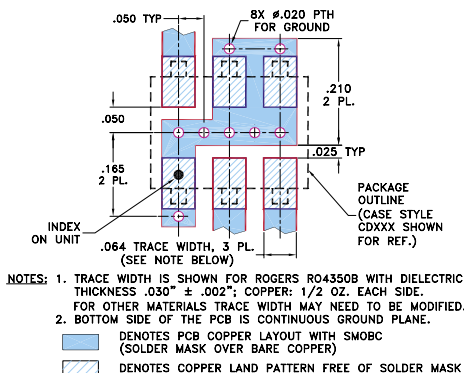
Outline Drawing



Outline Dimensions (inch/mm)

A	B	C	D	E	F	
.250	.31	.20	.100	.050	.055	
6.35	7.87	5.08	2.54	1.27	1.40	
G	H	J	K			wt
.040	.070	.270	.050			grams
1.02	1.78	6.86	1.27			0.50

Demo Board MCL P/N: TB-03
Suggested PCB Layout (PL-052)



Electrical Specifications

FREQUENCY (MHz)	CONVERSION LOSS (dB)	LO-RF ISOLATION (dB)			LO-IF ISOLATION (dB)			IP3 at center band (dBm)						
		L	M	U	L	M	U							
2-500	DC-500	55	44	44	25	33	20	50	34	45	25	37	22	22

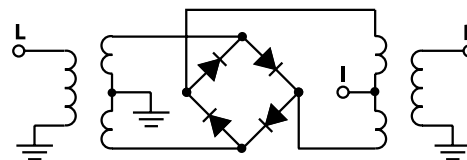
1 dB COMP.: +14 dBm typ.
For phase detection, DC output positive with in-phase RF & LO.

L = low range [f_1 to $10 f_1$]
M = mid range [$2f_1$ to $f_1/2$]
U = upper range [$f_1/2$ to f_1]

Typical Performance Data

Frequency (MHz)	Conversion Loss (dB)		Isolation L-R (dB)	Isolation L-I (dB)	VSWR RF Port (:1)	VSWR LO Port (:1)
	LO	LO +17dBm	LO +17dBm	LO +17dBm	LO +17dBm	LO +17dBm
2.00	32.00	6.78	79.29	69.19	1.33	1.77
4.00	34.00	6.60	72.35	63.39	1.20	1.75
5.00	35.00	6.57	71.51	62.98	1.15	1.82
10.00	40.00	6.55	65.84	61.30	1.14	1.82
20.00	50.00	6.48	59.50	58.68	1.13	1.75
35.20	65.20	6.36	51.64	53.67	1.14	1.75
50.00	80.00	6.53	51.61	53.63	1.14	1.76
85.00	55.00	6.47	45.13	48.67	1.15	1.74
100.00	70.00	6.48	44.98	48.52	1.17	1.71
134.80	104.80	6.32	41.19	46.50	1.19	1.69
184.60	154.60	6.35	38.78	44.90	1.22	1.65
200.00	170.00	6.40	38.62	44.42	1.23	1.62
234.40	204.40	6.30	36.44	41.20	1.24	1.63
250.00	220.00	6.22	36.14	41.01	1.26	1.62
284.20	254.20	6.22	35.11	38.57	1.30	1.58
334.00	304.00	6.18	33.38	37.07	1.34	1.54
383.80	353.80	6.11	32.33	33.77	1.39	1.51
433.60	403.60	6.16	32.22	31.10	1.44	1.45
483.40	453.40	6.45	31.29	29.09	1.47	1.41
500.00	470.00	6.45	30.80	28.30	1.49	1.39

Electrical Schematic



Mini-Circuits®
ISO 9001 ISO 14001 CERTIFIED

ALL NEW
minicircuits.com

P.O. Box 350166, Brooklyn, New York 11235-0003 (718) 934-4500 Fax (718) 332-4661 For detailed performance specs & shopping online see Mini-Circuits web site



The Design Engineers Search Engine Provides ACTUAL Data Instantly From MINI-CIRCUITS At: www.minicircuits.com

RF/IF MICROWAVE COMPONENTS

REV. B
M102713
RMS-1H
061228
Page 1 of 2

Performance Charts

