



E-Series Surface Mount Mixer

0.5 – 500 MHz

EMRS-1

Features

- +7 dBm LO Power
- Up to +1 dBm RF
- Surface Mount
- Tape and Reel Packaging Available

Specifications @ 25°C

Frequency Range		
RF, LO	0.5–500 MHz	
IF	DC–500 MHz	

Conversion Loss		
1.0–250 MHz	5.5 dB Typ	7.0 dB Max
0.5–500 MHz	6.2 dB Typ	8.5 dB Max

Isolation			
LO to RF			
0.5–5.0 MHz	55 dB Typ	50 dB Min	
5–250 MHz	33 dB Typ	25 dB Min	
250–500 MHz	27 dB Typ	20 dB Min	
LO to IF			
0.5–5.0 MHz	55 dB Typ	45 dB Min	
5–250 MHz	30 dB Typ	23 dB Min	
250–500 MHz	24 dB Typ	19 dB Min	

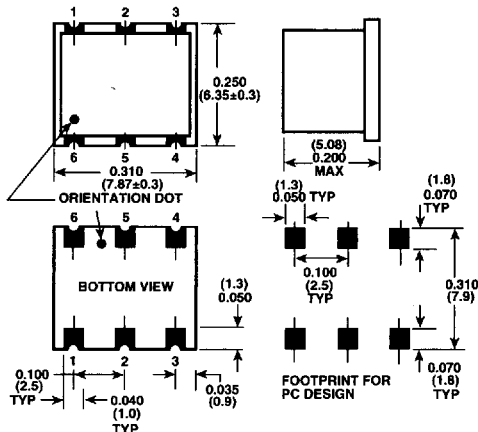
Operating Characteristics

Impedance	50 Ohms Nominal
RF Input for 1 dB Compression	+1 dBm

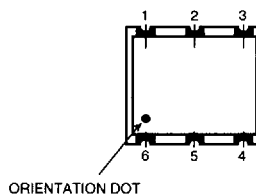
Absolute Maximum Ratings

Parameter	Absolute Maximum
RF Power	50 mW
Peak IF Current	40 mA
Operating/Storage Temp.	-55 °C to +100 °C
Pin Temperature (10 sec.)	+260 °C

SM-1



Pin Configuration (Top View)



Function	Pin No.
LO	1
RF	4
IF	5
Ground	2,3,6
Case Ground	–

Specifications Subject to Change Without Notice