

Ceramic Surface Mount Frequency Mixer WIDE BAND

SIM-153LH+

Level 10 (LO Power +10 dBm) 3200 to 15000 MHz



CASE STYLE: HV1195
PRICE: \$11.95 ea. QTY (10-49)

Maximum Ratings

Operating Temperature	-40°C to 85°C
Storage Temperature	-55°C to 100°C
RF Power	50mW

For extended temperature range, consult factory.

Pin Connections

LO	8
RF	4
IF	2
GROUND	1,3,5,6,7

Features

- wide bandwidth, 3200 to 15000 MHz
- low conversion loss, 6.1 dB typ.
- high L-R isolation, 36 dB typ.
- excellent IF BW, DC to 4000 MHz
- LTCC double balanced mixer
- low profile, 0.08"
- protected by US patent 7,027,795
- useable as up and down converter

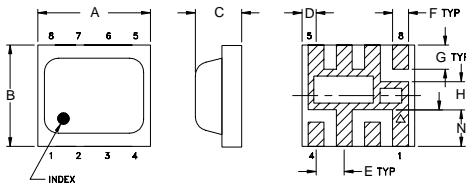
Applications

- satellite up and down converters
- defense radar and communications
- line of sight links
- federal fixed service
- WIFI
- blue tooth
- VSAT
- ISM

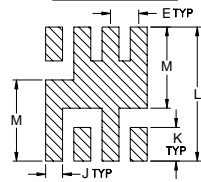
+ RoHS compliant in accordance with EU Directive (2002/95/EC)

The +Suffix has been added in order to identify RoHS Compliance. See our web site for RoHS Compliance methodologies and qualifications.

Outline Drawing



PCB Land Pattern

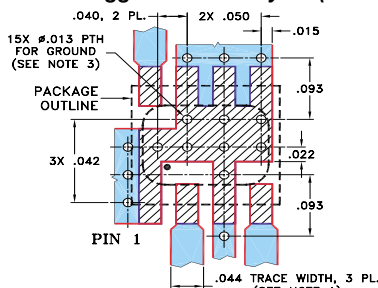


Suggested Layout, Tolerance to be within ±.002

Outline Dimensions (inch/mm)

A	B	C	D	E	F	G
0.200	0.180	0.087	0.025	0.050	0.028	0.043
5.08	4.57	2.21	0.64	1.27	0.71	1.09
H	J	K	L	M	N	wt
.0050	.030	0.060	0.238	0.144	0.065	grams
0.13	0.76	1.52	6.05	3.66	1.65	0.08

Demo Board MCL P/N: TB-382 Suggested PCB Layout (PL-239)



- NOTES: 1. TRACE WIDTH IS SHOWN FOR ROGERS RO4350B WITH DIELECTRIC THICKNESS .020" ± .0015". COPPER: 1/2 OZ. EACH SIDE. FOR OTHER MATERIALS TRACE WIDTH MAY NEED TO BE MODIFIED.
2. BOTTOM SIDE OF THE PCB IS CONTINUOUS GROUND PLANE.
3. THE PLATED THROUGH VIA HOLES IN THE PCB GROUND PAD SHALL BE PLUGGED. IF VIA HOLES CANNOT BE PLUGGED, IT IS RECOMMENDED TO CAP THE VIAS WITH SOLDER MASK ON THE BACK SIDE OF THE BOARD.
- DENOTES PCB COPPER LAYOUT WITH SMOBC (SOLDER MASK OVER BARE COPPER)
■ DENOTES COPPER LAND PATTERN FREE OF SOLDER MASK

Electrical Specifications

FREQUENCY (MHz)	CONVERSION LOSS* (dB)	LO-RF ISOLATION (dB)		LO-IF ISOLATION (dB)		IP3 at center band (dBm)			
		Typ.	Min.	Typ.	Min.				
3200-15000	DC-4000								
3200-4500		6.4	0.2	8.9	40	32	19	13	12
4500-5100		6.5	0.2	8.7	38	32	15	10	18
5100-14000		7.5	0.4	12.4	35	23	15	9	—
14000-15000		7.8	0.3	10.3	30	21	28	19	—

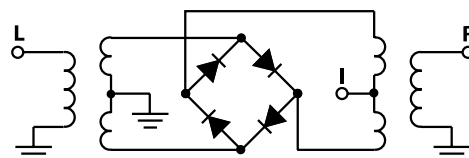
1 dB COMPR. +3 dBm typ.

* Conversion loss at 30 MHz IF. σ is a measure of repeatability from unit to unit.

Typical Performance Data

Frequency (MHz)	Conversion Loss (dB)	Isolation L-R (dB)	Isolation L-I (dB)	VSWR RF Port (:1)	VSWR LO Port (:1)
3200.00	6.79	40.99	20.99	2.37	13.77
3500.00	6.32	40.31	20.57	2.76	8.58
4000.00	6.14	40.60	18.67	3.17	5.31
4500.00	6.20	36.96	15.28	2.55	3.13
5000.00	6.53	39.95	13.46	3.80	1.69
5600.00	6.82	38.66	14.05	3.82	2.42
6500.00	5.78	39.33	16.94	2.37	2.99
7400.00	5.18	35.38	16.21	1.28	3.04
8000.00	5.34	27.64	11.48	1.59	2.38
8500.00	5.64	28.80	15.40	2.21	1.70
9000.00	6.60	41.06	22.55	3.22	1.81
9500.00	7.58	32.65	20.12	3.61	2.04
10000.00	8.06	35.87	19.69	4.59	2.89
11000.00	8.79	42.06	28.67	5.03	2.72
12000.00	9.65	35.00	41.07	5.08	2.82
12600.00	9.68	35.75	40.20	5.15	2.00
13050.00	9.86	38.27	36.10	4.51	1.87
13500.00	9.68	37.53	33.24	4.42	2.32
14025.00	8.42	37.98	30.91	2.53	2.74
14550.00	7.32	32.13	29.55	1.16	2.43
15075.00	8.42	24.21	30.95	1.92	2.93

Electrical Schematic



Mini-Circuits

INTERNET <http://www.minicircuits.com>

P.O. Box 350166, Brooklyn, New York 11235-0003 (718) 934-4500 Fax (718) 332-4661

Distribution Centers NORTH AMERICA 800-654-7949 • 417-335-5935 • Fax 417-335-5945 • EUROPE 44-1252-832600 • Fax 44-1252-837010

Mini-Circuits ISO 9001 & ISO 14001 Certified



REV. OR
M105046
SIM-153LH
ED-12399/3
DJ/RS/CP
060808
Page 1 of 2

