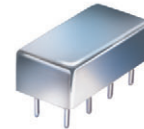


# Plug-In Frequency Mixer

## SBL-1

Level 7 (LO Power +7 dBm) 1 to 500 MHz



CASE STYLE: A06 -

### Maximum Ratings

Operating Temperature	-55°C to 100°C
Storage Temperature	-55°C to 100°C
RF Power	50mW
IF Current	40mA

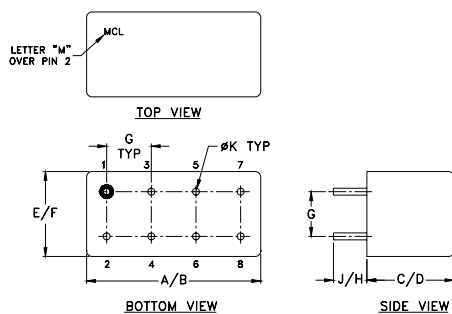
Permanent damage may occur if any of these limits are exceeded.

### Pin Connections

LO	8
RF	1
IF	3,4 <sup>^</sup>
GROUND	2,5,6,7

<sup>^</sup> pins must be connected together externally

### Outline Drawing



### Outline Dimensions (inch/mm)

A	B	C	D	E	F
.770	.800	.285	.310	.370	.400
19.56	20.32	7.24	7.87	9.40	10.16
G	H	J	K	wt	
.200	.20	.14	.031	grams	
5.08	5.08	3.56	0.79	5.2	

### Features

- excellent conversion loss, 5.6 dB typ.
- high L-R isolation, 45 dB typ. L-I isolation, 40 dB typ.
- rugged welded construction

### Applications

- VHF
- defense & federal communications

### Electrical Specifications

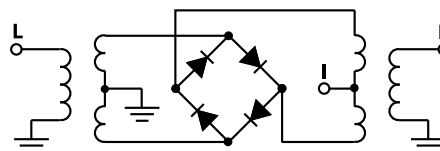
FREQUENCY (MHz)	CONVERSION LOSS (dB)	LO-RF ISOLATION (dB)			LO-IF ISOLATION (dB)							
		L	M	U	L	M	U					
1-500	DC-500	60	45	35	40	25	45	35	40	25	30	20

1 dB COMP.: +1 dBm typ. L = low range [ $f_1$  to  $10 f_1$ ] M = mid range [ $10 f_1$  to  $f_1/2$ ] U = upper range [ $f_1/2$  to  $f_1$ ]  
 $\bar{X}$  = Mid-Band,  $\sigma$  = Total Range, Max. = Max. Typ. = Typical

### Typical Performance Data

Frequency (MHz)		Conversion Loss (dB)	Isolation L-R (dB)	Isolation L-I (dB)	VSWR RF Port (:1)	VSWR LO Port (:1)
RF	LO	LO +7dBm	LO +7dBm	LO +7dBm	LO +7dBm	LO +7dBm
1.00	31.00	6.67	67.00	65.61	1.80	3.75
2.00	32.00	6.24	67.00	67.00	1.14	2.81
5.00	35.00	5.74	64.84	67.00	1.14	2.89
10.00	40.00	5.58	64.19	64.81	1.14	2.83
20.00	50.00	5.67	62.22	61.69	1.15	2.69
32.19	62.19	5.60	59.04	57.74	1.16	2.72
50.00	80.00	5.60	56.71	54.39	1.17	2.62
78.97	48.97	5.56	52.21	49.67	1.18	2.62
100.00	70.00	5.52	49.41	46.90	1.20	2.66
156.94	126.94	5.53	44.20	41.66	1.22	2.62
200.00	170.00	5.68	41.56	38.98	1.26	2.58
203.72	173.72	5.67	41.05	38.52	1.26	2.56
250.50	220.50	5.63	40.04	37.29	1.28	2.59
297.29	267.29	5.61	36.90	33.97	1.30	2.64
344.07	314.07	5.81	37.11	33.88	1.31	2.59
375.26	345.26	6.13	36.02	32.79	1.30	2.60
406.44	376.44	6.15	34.80	31.05	1.28	2.72
437.63	407.63	6.08	33.79	30.39	1.27	2.77
468.82	438.82	6.00	32.80	30.12	1.24	2.82
500.00	470.00	6.31	32.36	30.37	1.21	3.01

### Electrical Schematic



**Mini-Circuits®**  
ISO 9001 ISO 14001 AS 9100 CERTIFIED

[minicircuits.com](http://minicircuits.com)

P.O. Box 350166, Brooklyn, New York 11235-0003 (718) 934-4500 Fax (718) 332-4661 For detailed performance specs & shopping online see Mini-Circuits web site



The Design Engineers Search Engine Provides ACTUAL Data Instantly From MINI-CIRCUITS At: [www.minicircuits.com](http://www.minicircuits.com)

IF/RF MICROWAVE COMPONENTS

REV. A  
M98898  
SBL-1  
DJ/TD/CP  
061211  
Page 1 of 2

