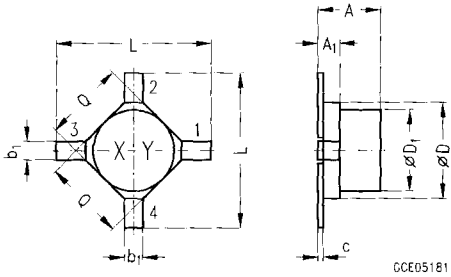


# Package Outlines

## RF and AF Transistors and Diodes

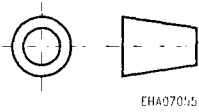
All dimensions in mm, unless otherwise specified.

### Cerec-X



GCE05181

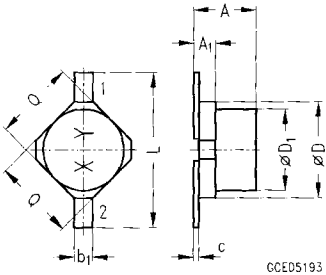
Approx. weight: 0.02 g



EHA07015

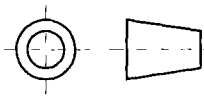
Dim.	min.	typ.	max.
A	–	–	1.6
A <sub>1</sub>	–	0.6	–
b <sub>1</sub>	0.45	0.5	0.55
c	0.1	0.15	0.2
D	2.35	2.55	2.75
D <sub>1</sub>	–	2.1	–
L	4.0	4.2	–
Q	2.0	2.2	2.4

### Cerec-X



GCE05193

Approx. weight: 0.02 g



EHA07055

Dim.	min.	typ.	max.
A	–	–	1.6
A <sub>1</sub>	–	0.6	–
b <sub>1</sub>	0.45	0.5	0.55
c	0.1	0.15	0.2
D	2.35	2.55	2.75
D <sub>1</sub>	–	2.1	–
L	4.0	4.2	–
Q	2.0	2.2	2.4