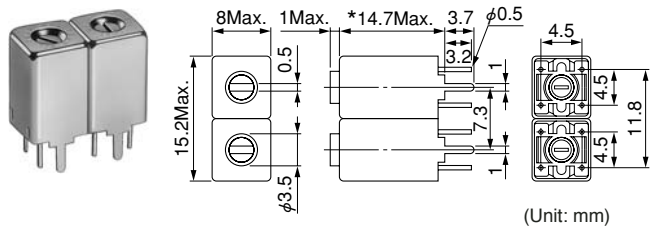


### 7HW Double Tuned 7HT Triple Tuned

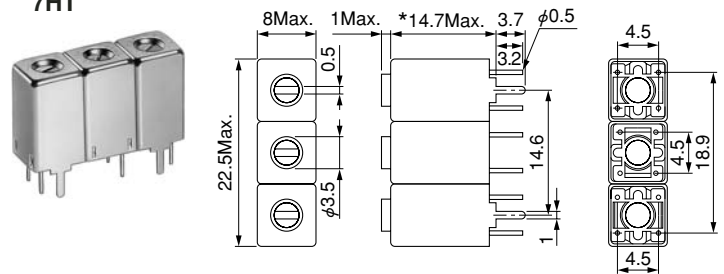
Frequency Range: 350MHz~1.2GHz  
RoHS compliant

#### 7HW



(Unit: mm)

#### 7HT



(Unit: mm)

\*Either 11 or 12.9mm height is possible. 高さ11mm、12.9mmも可能です

### Features

- Compact low-profile helical filters, ideal for mobile communications equipment.
- RoHS compliant

### 特長

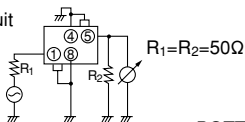
- 移動体通信に最適な小型薄形のヘルカルフィルタ
- RoHS 指令対応

### Examples of 900MHz frequency response

900MHz周波数感度例

#### 252HXPK-2709F

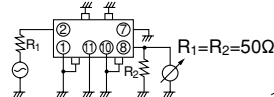
Test circuit



$R_1=R_2=50\Omega$

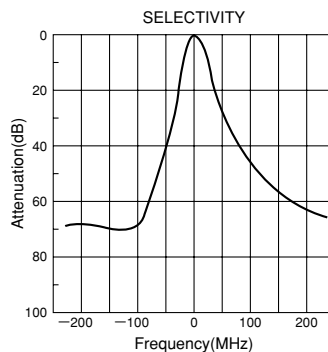
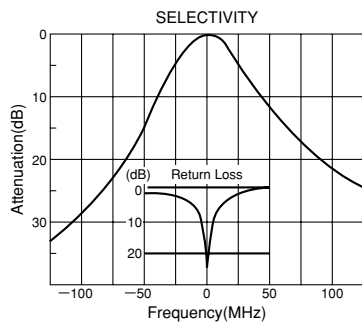
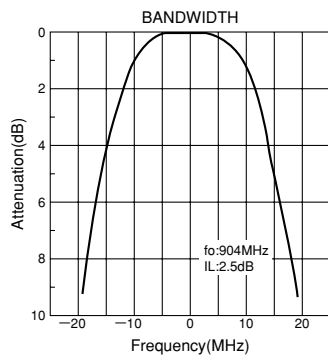
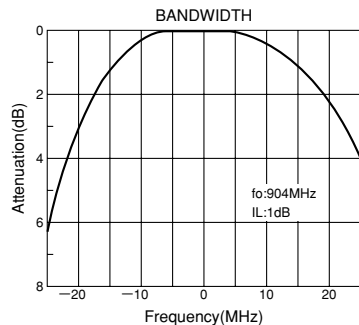
#### 302HXPK-1278B

Test circuit



$R_1=R_2=50\Omega$

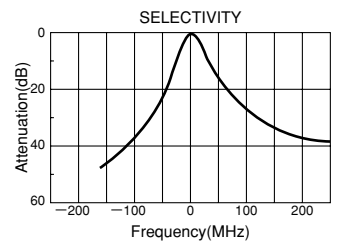
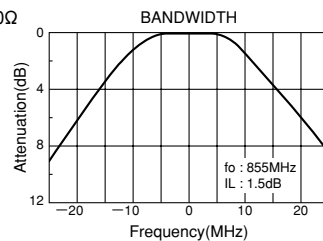
BOTTOM VIEW



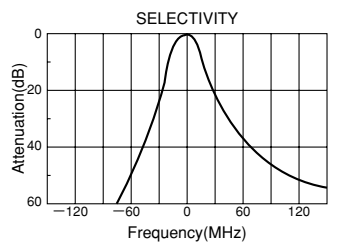
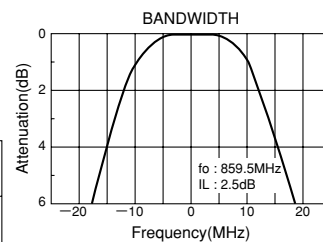
### Typical characteristic for MCA radio use

MCAラジオ用代表特性曲線

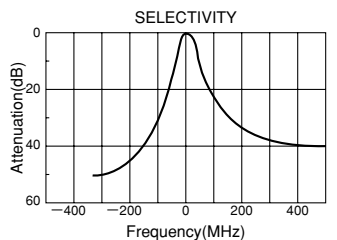
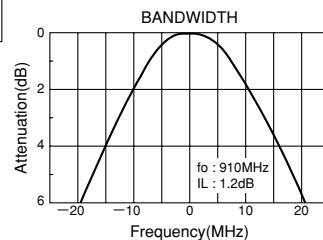
#### ANTENNA CIRCUIT FILTER 302MXPR-1077E



#### RF CIRCUIT FILTER 252HXPK-2674F



#### LOCAL FILTER 252HXPK-273F



continued on next page

次頁へ続く

continued from previous page  
前頁より続く

### SELECTION GUIDE FOR STANDARD FILTERS

#### TYPE 7HW (Double tuned)

東光品番	中心周波数	帯域幅	選択度		リップル	挿入損失
TOKO Part Number	Center Frequency (MHz)	Bandwidth (-1dB) (MHz) Min.	Fo - 50MHz (dB) Min.	Fo + 50MHz (dB) Min.	Ripple (dB) Max.	Insertion Loss (dB) Max.
7HW-35515A-360	360	7.0	35	25	0.5	3.0
7HW-36020A-370	370	7.0	35	25	0.5	3.0
7HW-37020A-380	380	7.0	35	20	0.5	3.0
7HW-38025A-390	390	7.0	28	20	0.5	3.0
7HW-39525A-410	410	7.0	25	18	0.5	3.0
7HW-40525A-420	420	8.0	25	18	0.5	3.0
7HW-42025A-435	435	8.0	25	18	0.5	3.0
7HW-43525A-450	450	8.0	25	18	0.5	3.0
7HW-45025A-460	460	8.0	20	16	0.5	3.0
7HW-46025A-475	475	8.0	20	16	0.5	3.0
7HW-47530A-490	490	10.0	18	14	0.5	3.0
7HW-49030A-505	505	10.0	18	14	0.5	3.0
7HW-51030A-525	525	10.0	14	12	0.5	3.0

#### TYPE 7HT (Triple tuned)

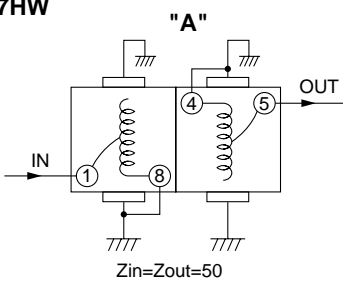
東光品番	中心周波数	帯域幅	選択度		リップル	挿入損失
TOKO Part Number	Center Frequency (MHz)	Bandwidth (-1dB) (MHz) Min.	Fo - ( )MHz (dB) Min.	Fo + ( )MHz (dB) Min.	Ripple (dB) Max.	Insertion Loss (dB) Max.
302MXPR-1138D	370	*6.0	35(30)	30(30)	1.0	4.5
302MXPR-1137D	390	*7.0	30(30)	25(30)	1.0	4.0
302MXPR-1136D	410	*8.0	30(30)	25(30)	1.0	3.5
302MXPR-1109D	415	13.0	40(50)	30(50)	1.0	3.5
302MXPR-1110D	465	12.0	40(50)	30(50)	1.0	4.0
302MXPR-1108D	500	13.0	36(50)	27(50)	1.0	3.5
302MXPR-1119D	680	10.0	43(50)	34(50)	1.0	4.5
302HXPB-1111B	833	*18.0	30(50)	23(50)	1.0	4.0

\*Bandwidth: 13dB

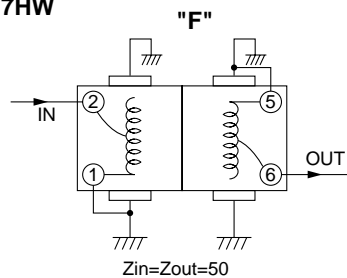
#### Test circuits

##### 測定回路

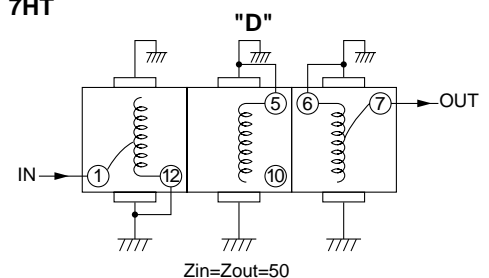
#### 7HW



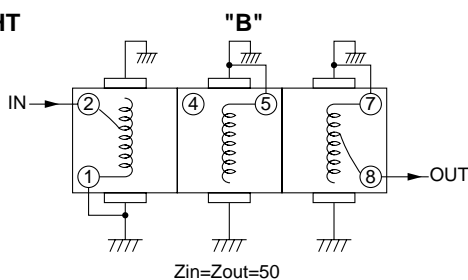
#### 7HW



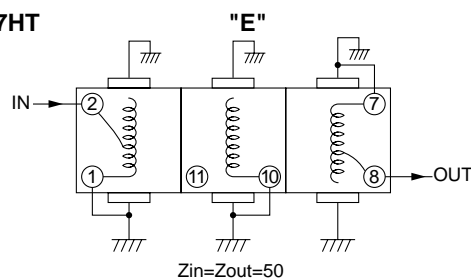
#### 7HT



#### 7HT



#### 7HT



(BOTTOM VIEW)