



SAW Components

Data Sheet B 619





SAW Components

B 619

Satellite Receiver Filter

479,50 MHz

Data Sheet

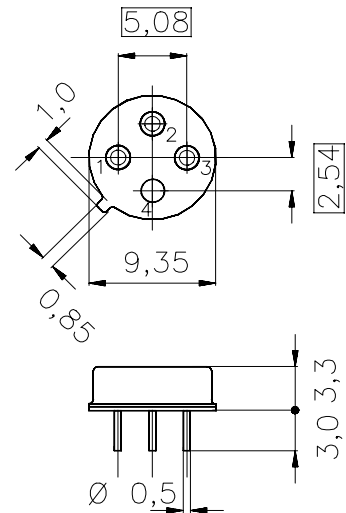
Features

- Two-channel satellite receiver filter
- IF filter for DSB receivers
- Constant group delay

Terminals

- Gold-plated NiFeCo alloy

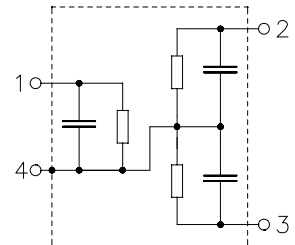
Metal package TO 39



Dimensions in mm, approx. weight 1,0 g

Pin configuration

- | | | |
|---|----------|-----------|
| 1 | Input | (Output) |
| 2 | Output 2 | (Input 2) |
| 3 | Output 1 | (Input 1) |
| 4 | Ground | |



Type	Ordering code	Marking and Package according to	Packing according to
B 619	B39481-B 619-B210	C61157-A7-A29	F61064-V8011-Z000

Electrostatic Sensitive Device (ESD)

Maximum ratings

Operable temperature range	T_A	-25/+85	°C	
Storage temperature range	T_{stg}	-40/+85	°C	
DC voltage	V_{DC}	0	V	between any terminals
AC voltages	V_{pp}	5	V	between any terminals



SAW Components

B 619

Satellite Receiver Filter

479,50 MHz

Data Sheet

Characteristics of channel 1

Reference temperature: $T_A = 25\text{ }^\circ\text{C}$
 Terminating source impedance: $Z_S = 50\ \Omega$
 Terminating load impedance: $Z_L = 50\ \Omega$
 Group delay aperture: 0,25MHz

			min.	typ.	max.	
Insertion attenuation	479,50 MHz	α	—	22,1	24,5	dB
Reference level for the following data						
Center frequency		f_c	478,50	479,50	480,50	MHz
Pass bandwidth		$\alpha_{rel} \leq 3\text{ dB}$ B_{3dB}	—	27,0	—	MHz
Relative attenuation		α_{rel}				
	466,00 MHz		—	3,2	5,0	dB
	493,00 MHz		—	3,5	5,0	dB
Lower sidelobe	430,00 ... 455,00 MHz		34,0	39,0	—	dB
Upper sidelobe	504,00 ... 530,00 MHz		34,0	39,0	—	dB
Reflected wave signal suppression						
	0,135 μs ... 2,0 μs after main pulse		40,0	45,0	—	dB
Amplitude ripple (p-p)		$\Delta\alpha$				
	471,00 ... 488,00 MHz		—	0,3	0,5	dB
Group delay ripple (p-p)		$\Delta\tau$				
	466,00 ... 493,00 MHz		—	10	18	ns
Impedance at 479,50 MHz						
	Input: $Z_{IN} = R_{IN} \parallel C_{IN}$		—	200 \parallel 3,6	—	$\Omega \parallel \text{pF}$
	Output: $Z_{OUT} = R_{OUT} \parallel C_{OUT}$		—	240 \parallel 3,9	—	$\Omega \parallel \text{pF}$
Temperature coefficient of frequency		TC_f	—	- 86	—	ppm/K



SAW Components

B 619

Satellite Receiver Filter

479,50 MHz

Data Sheet

Characteristics of channel 2

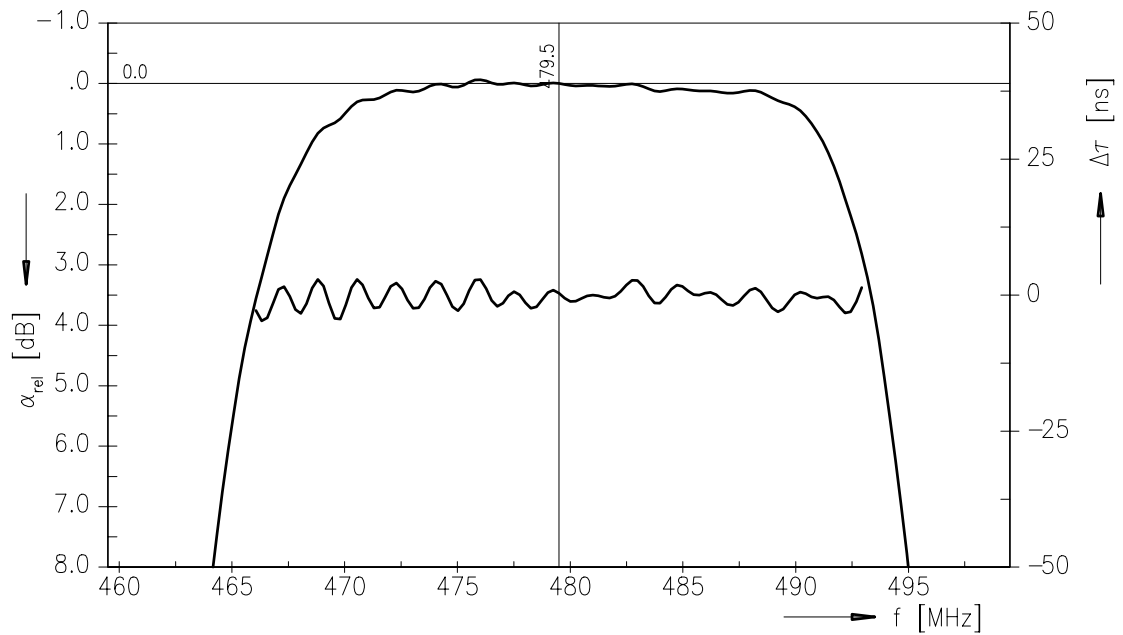
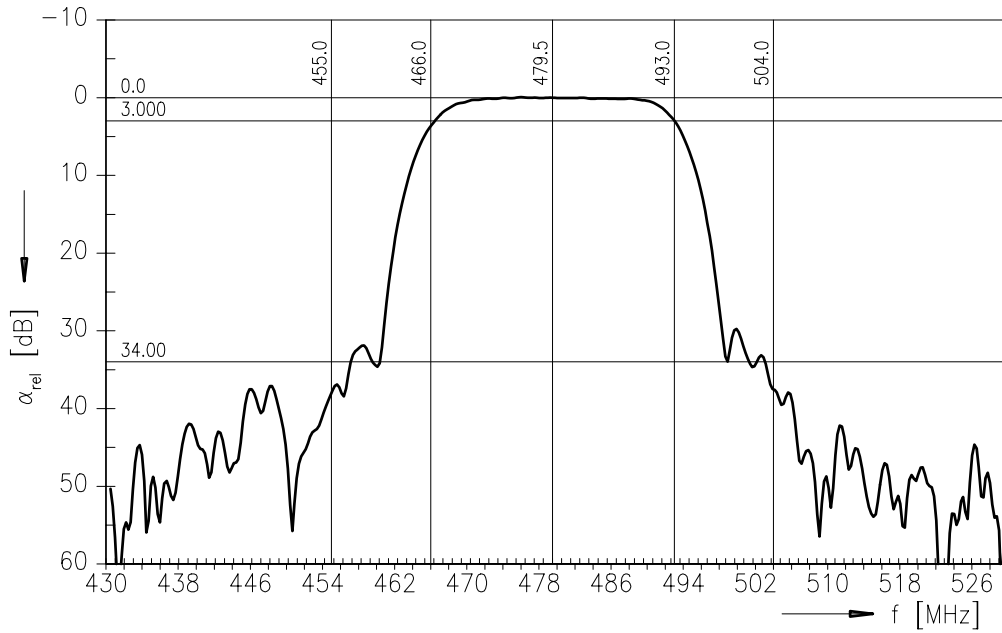
Reference temperature: $T_A = 25\text{ }^\circ\text{C}$
 Terminating source impedance: $Z_S = 50\ \Omega$
 Terminating load impedance: $Z_L = 50\ \Omega$
 Group delay aperture: 0,25MHz

			min.	typ.	max.	
Insertion attenuation	479,50 MHz	α	—	22,7	23,6	dB
Reference level for the following data						
Center frequency		f_c	478,50	479,50	480,50	MHz
Pass bandwidth		$\alpha_{rel} \leq 3\text{ dB}$ B_{3dB}	—	36,0	—	MHz
Relative attenuation		α_{rel}				
	461,50 MHz		—	3,5	4,8	dB
	497,50 MHz		—	2,3	4,8	dB
Lower sidelobe	430,00 ... 449,00 MHz		34,0	39,0	—	dB
Upper sidelobe	510,00 ... 530,00 MHz		30,0	36,0	—	dB
Reflected wave signal suppression						
	0,13 μs ... 2,0 μs after main pulse		40,0	45,0	—	dB
Amplitude ripple (p-p)		$\Delta\alpha$				
	468,50 ... 490,50 MHz		—	0,3	0,5	dB
Group delay ripple (p-p)		$\Delta\tau$				
	461,50 ... 497,50 MHz		—	12	18	ns
Impedance at 479,50 MHz						
	Output: $Z_{OUT} = R_{OUT} \parallel C_{OUT}$		—	360 2,5	—	$\Omega \parallel \text{pF}$
Temperature coefficient of frequency		TC_f	—	- 86	—	ppm/K



Data Sheet

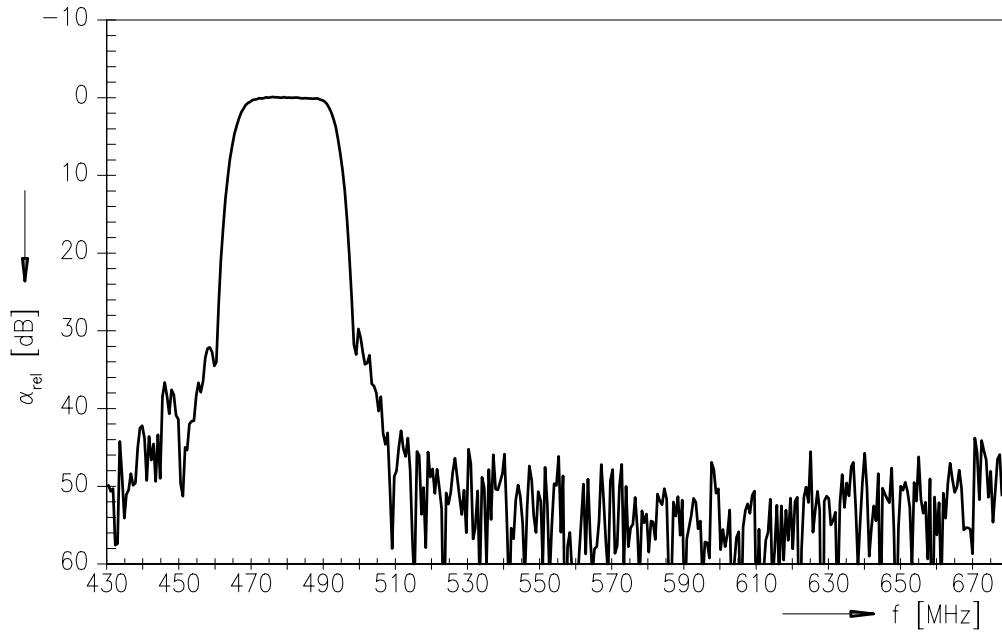
Frequency response



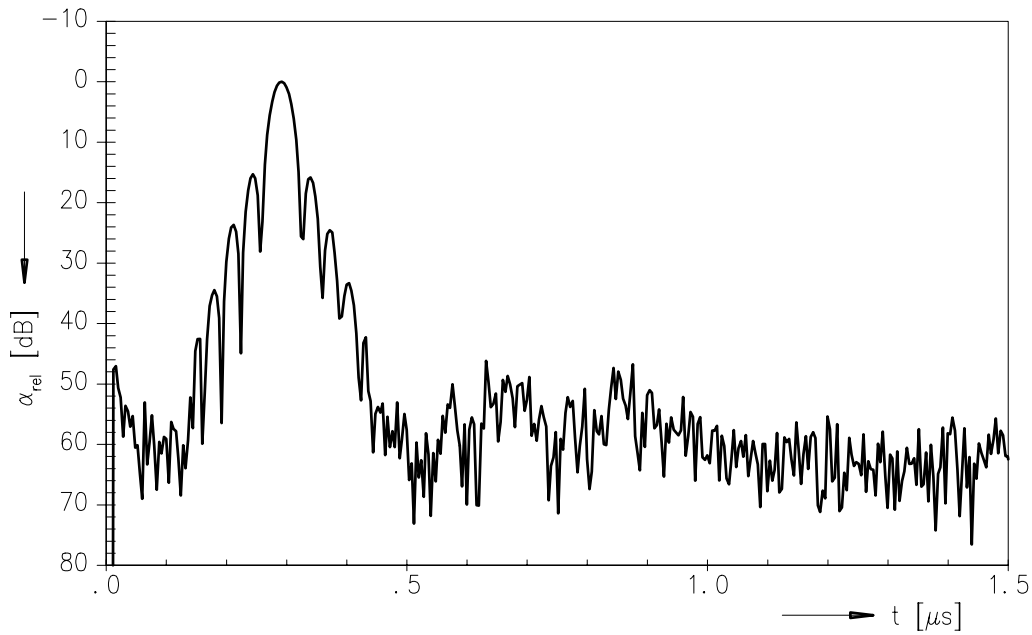


Data Sheet

Frequency response



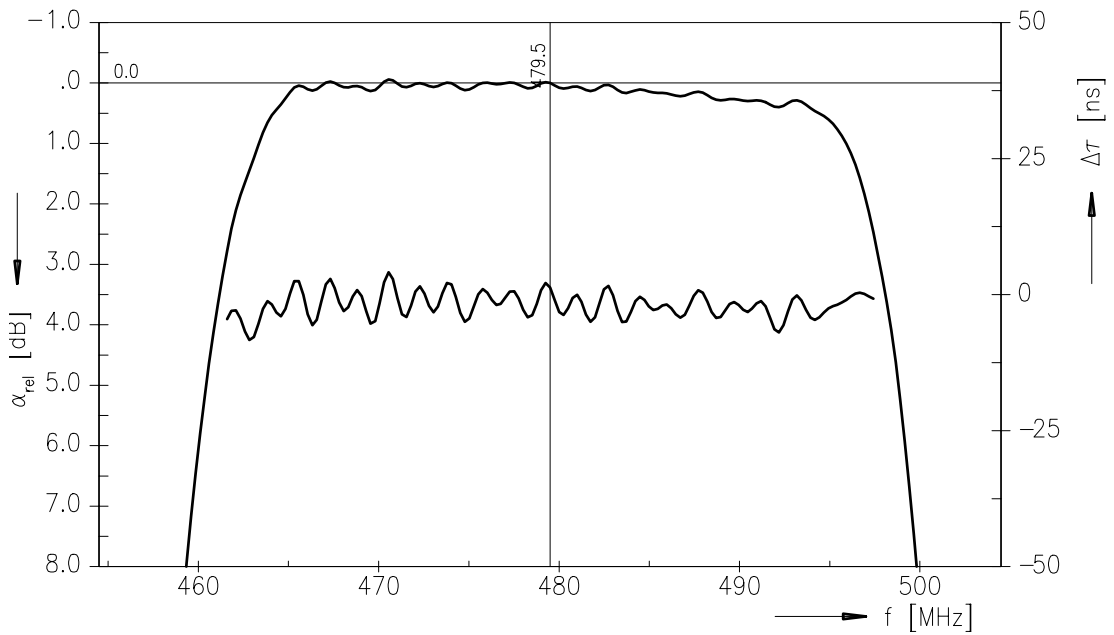
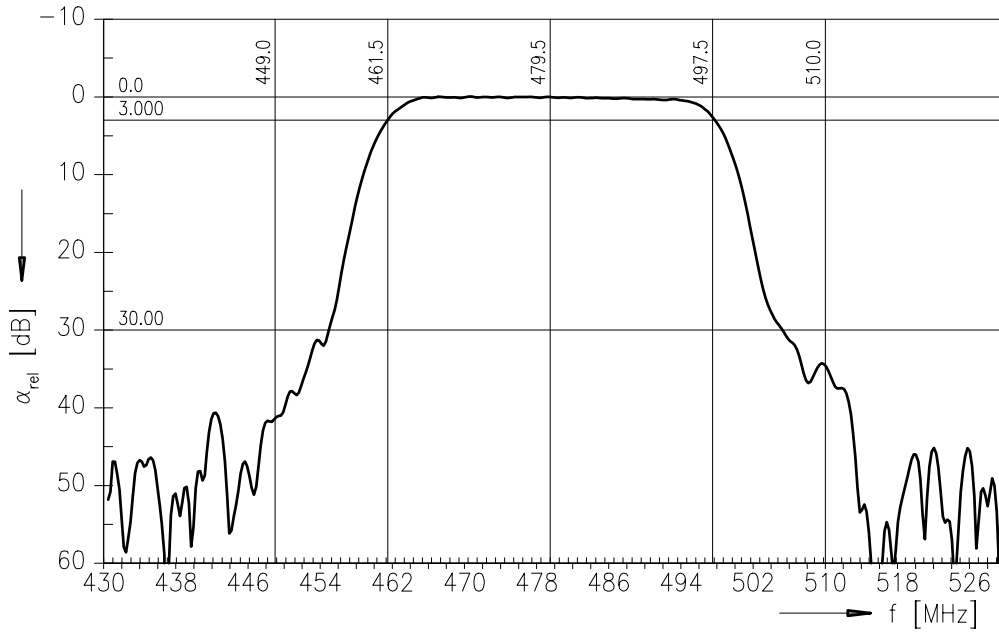
Time domain response





Data Sheet

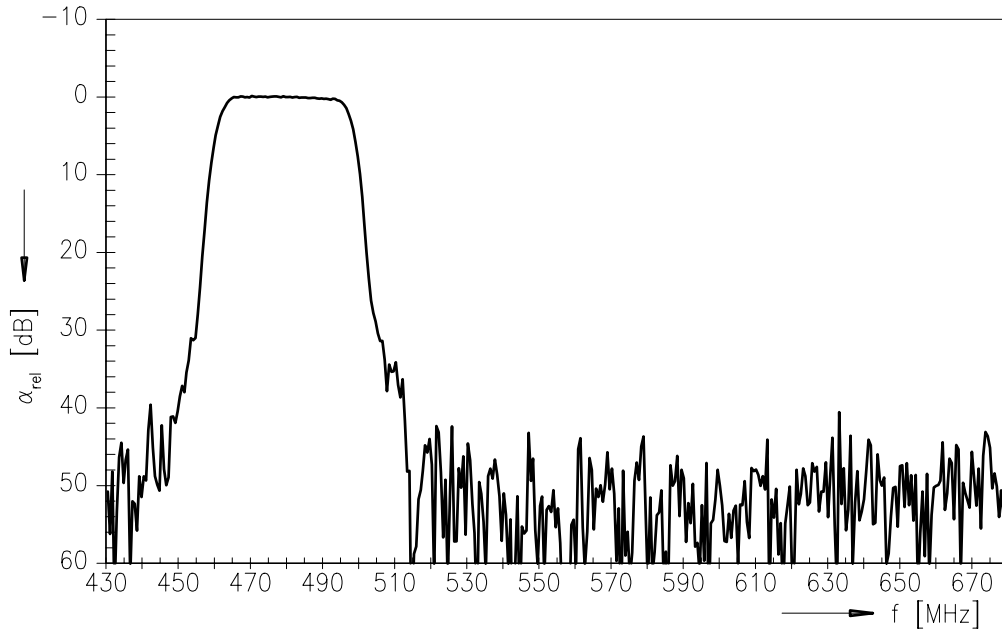
Frequency response



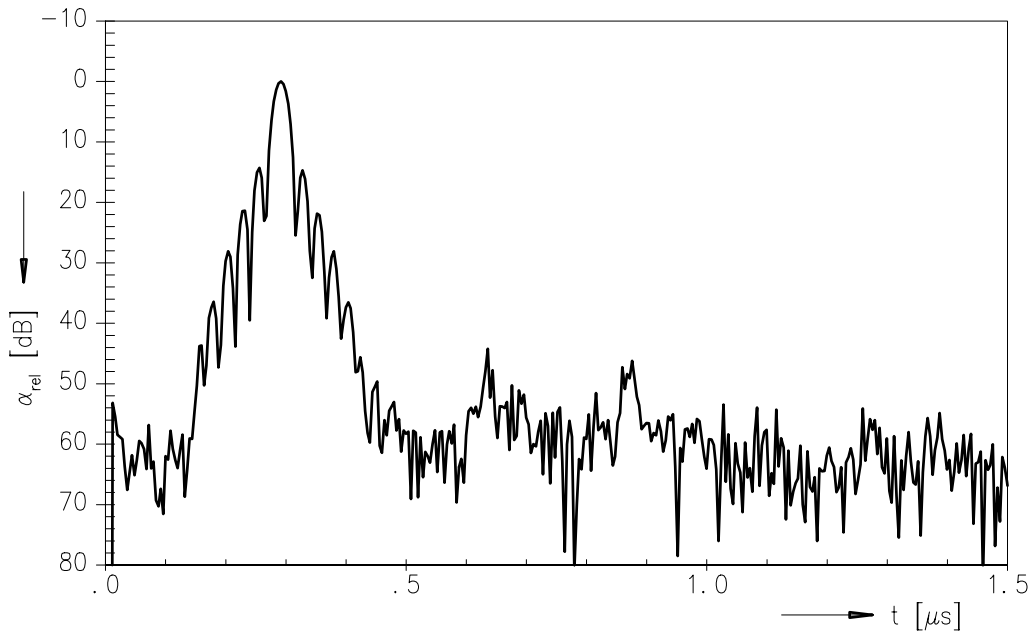


Data Sheet

Frequency response



Time domain response





SAW Components

B 619

Satellite Receiver Filter

479,50 MHz

Data Sheet

Published by EPCOS AG
Surface Acoustic Wave Components Division, OFW E UE
P.O. Box 80 17 09, D-81617 München

© EPCOS AG 1999. All Rights Reserved.

As far as patents or other rights of third parties are concerned, liability is only assumed for components per se, not for applications, processes and circuits implemented within components or assemblies.

The information describes the type of component and shall not be considered as assured characteristics.

Terms of delivery and rights to change design reserved.

For questions on technology, prices and delivery please contact the sales offices of EPCOS AG or the international representatives.

Due to technical requirements components may contain dangerous substances. For information on the type in question please also contact one of our sales offices.