



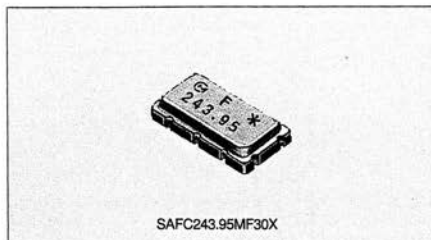
# SURFACE ACOUSTIC WAVE FILTER

muRata

SAFC243.95MF30X for Digital Cordless Telephone

## SAW Filter for PHS 1st-IF

SAFC243.95MF30X series are high selectivity SAW filters for PHS 1st IF. They are designed on X'tal substrates which give high stability and excellent temperature characteristics. Multi-layered ceramic package(SC59) is suitable for miniaturization.

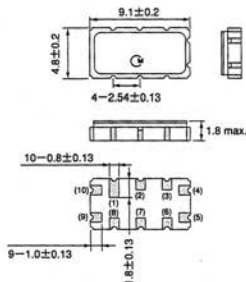


### FEATURES

1. Small size, light weight.
2. Applicable for reflow soldering, washable and available to supply with taping.
3. Flat GDT characteristics within pass band.
4. High selectivity at  $\pm 600\text{MHz}$  and  $\pm 1.2\text{MHz}$  of adjacent channels.
5. 60 dB min. attenuation at  $-21.4\text{MHz}$  of image noise points.

### DIMENSIONS

SC59 Package



(10) : Input  
 (5) : Output  
 Others : Ground  
 (in mm)

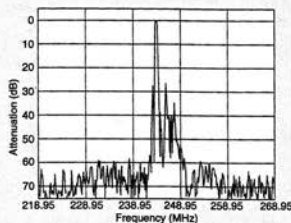
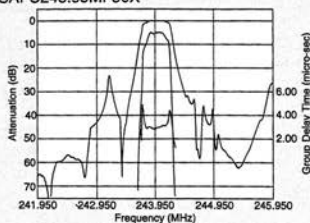
### SPECIFICATIONS

Item	Specifications
Part Number	SAFC243.95MF30X
Nominal Center Frequency (fo)	243.95MHz
3 dB Bandwidth (from fo)	± 110 KHz min.
Stop Band Attenuation (from peak level)	
I) at fo ± 600KHz	30 dB min.
II) at fo ± 1.2MHz	40 dB min.
III) within fo - 21 ~ fo ± 22MHz	60 dB min.
Insertion Loss(at fo)	5 dB max.
Ripple (within fo ± 100KHz)	1.0 dB max.
Group Delay Deviation (within fo ± 100KHz)	1.0 μ sec.max.
Input and Output Impedance	500 Ω // -4.5pF

(Operating Temperature Range : -10°C ~ +60°C)

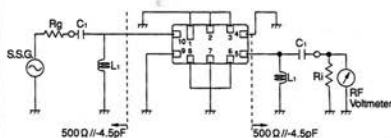
## FREQUENCY CHARACTERISTICS

SAFC243.95MF30X



## TEST CIRCUIT

- Test Circuit (SAFC243.95MF30X)



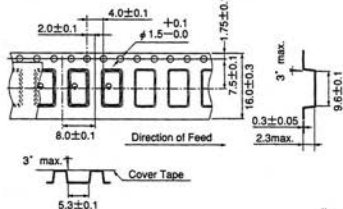
- Terminating impedance including L1, C1 and circuit pattern shall be adjusted to be  $500\ \Omega // 4.5\text{pF}$  at 243.950MHz.
- $R_g = R_i = 50\ \Omega$

- 0dB Level



$$R_g = R_i = 50\ \Omega$$

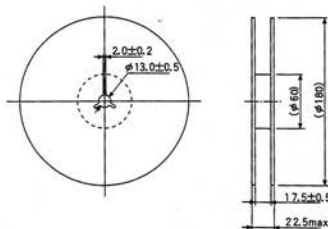
## TAPING DIMENSIONS



(in mm)

- The marked part number is faced on the cover tape side.
- The direction of filter shall be fixed. The input terminal shall be faced on the hole of the tape.

## REEL DIMENSIONS



(in mm)

- SAFC243.95MF30X-TC: "-TC" shows that SAW filter are taped in a plastic tape package.

## NOTE

Please note that SAW filter may be deteriorated or damaged, when static electricity is impressed to it.

## MINIMUM QUANTITY (order in sets only)

500 pcs. / reel