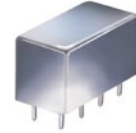


# Plug-In Frequency Mixer

## SRA-2H

Level 17 (LO Power +17 dBm) 2 to 1000 MHz



CASE STYLE: A01

### Maximum Ratings

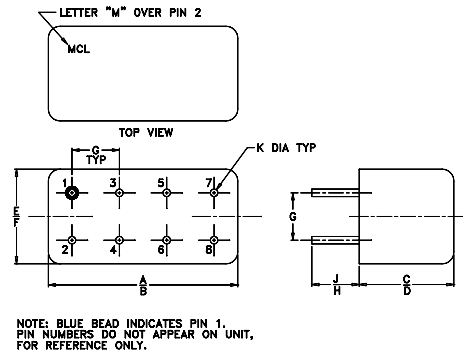
Operating Temperature	-55°C to 100°C
Storage Temperature	-55°C to 100°C
RF Power	200mW
IF Current	40mA

### Pin Connections

LO	8
RF	1
IF	3,4 <sup>^</sup>
GROUND	2,5,6,7
CASE GROUND	2,5,6,7

<sup>^</sup> pins must be connected together externally

### Outline Drawing



### Outline Dimensions (inch/mm)

A	B	C	D	E	F
.770	.800	.385	.400	.370	.400
19.56	20.32	9.78	10.16	9.40	10.16
G	H	J	K	wt	
.200	.20	.14	.031	grams	
5.08	5.08	3.56	0.79	5.2	

### Features

- excellent conversion loss, 6.34 dB typ.
- good L-R isolation, 35 dB typ. L-I isolation, 30 dB typ.
- rugged welded construction
- hermetic

### Applications

- cellular
- VHF/UHF
- ISM/GSM
- defense & federal communications

### Electrical Specifications

FREQUENCY (MHz)		CONVERSION LOSS (dB)				LO-RF ISOLATION (dB)						LO-IF ISOLATION (dB)					
LO/RF $f_L$ - $f_U$	IF	Mid-Band m		Total Range Max.	Max.	L		M		U		L		M		U	
		$\bar{X}$	$\sigma$			Typ.	Min.	Typ.	Min.	Typ.	Min.	Typ.	Min.	Typ.	Min.	Typ.	Min.
2-1000	DC-1000	6.34	.14	7.5	10.0	50	40	35	25	35	25	45	30	30	20	25	20

1 dB COMP.: +10 dBm typ.

L = low range [ $f_L$  to  $10 f_L$ ]

m = mid band [ $2 f_L$  to  $f_U/2$ ]

M = mid range [ $10 f_L$  to  $f_U/2$ ]

U = upper range [ $f_U/2$  to  $f_U$ ]

### Typical Performance Data

Frequency (MHz)		Conversion Loss (dB)	Isolation L-R (dB)	Isolation L-I (dB)	VSWR RF Port (:1)	VSWR LO Port (:1)
RF	LO	LO +17dBm	LO +17dBm	LO +17dBm	LO +17dBm	LO +17dBm
2.00	32.00	6.71	49.37	47.92	1.29	2.33
34.19	64.19	6.17	46.77	45.60	1.02	2.11
66.39	96.39	6.25	45.81	44.10	1.01	2.15
130.78	100.78	6.14	44.80	41.52	1.01	2.04
195.16	165.16	6.30	43.07	39.47	1.02	2.05
227.36	197.36	6.32	41.46	37.60	1.04	1.99
291.75	261.75	6.23	39.76	35.26	1.05	1.99
356.13	326.13	6.42	38.97	33.32	1.07	1.98
420.52	390.52	6.62	37.70	31.07	1.08	2.04
484.91	454.91	6.65	37.81	29.46	1.09	2.01
517.10	487.10	6.59	37.82	29.13	1.12	2.01
549.30	519.30	6.96	38.18	30.50	1.15	2.02
645.88	615.88	7.10	37.13	29.06	1.30	1.97
678.07	648.07	7.02	33.22	26.56	1.38	1.93
742.46	712.46	6.87	32.76	24.80	1.62	1.92
806.85	776.85	7.04	31.78	23.82	2.00	1.96
871.24	841.24	8.09	32.53	23.46	2.47	1.97
935.63	905.63	8.66	33.52	23.26	3.33	1.98
967.82	937.82	8.70	34.06	22.82	3.56	2.02
1000.00	970.00	8.81	33.66	22.59	3.82	2.11

### Electrical Schematic

