

■ Features

- Stability dielectric constant
- High Q factor (160~1000)
- Wide frequency range (400~6000MHz)
- Surface mount(no-pin) and surface mount (W/pin) available
- Frequency tolerance to 1.0%
- Temperature stable ($0 \nabla 15$ ppm/°C)
- Operating Temperature Range(-40°C to + 85°C)

■ Part numbering

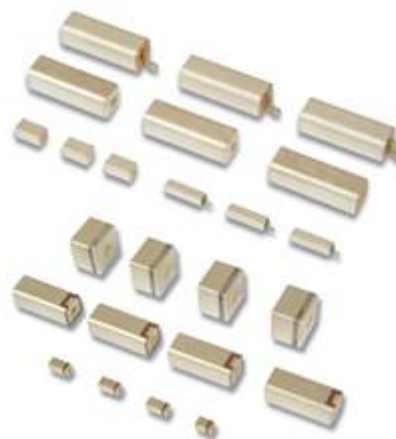
KS37 D60 10 4 1000 - 1.0 S

① ② ③ ④ ⑤ ⑥ ⑦

- ① Material series
- ② Size
- ③ Characteristic impedance (W)
- ④ Resonance wave length
- ⑤ Resonance frequency (MHz)
- ⑥ Frequency tolerance (%)
- ⑦ Pole pin - S : with pole pin
 N : without pole pin
 P : print type
 L : Laser type

■ Applications

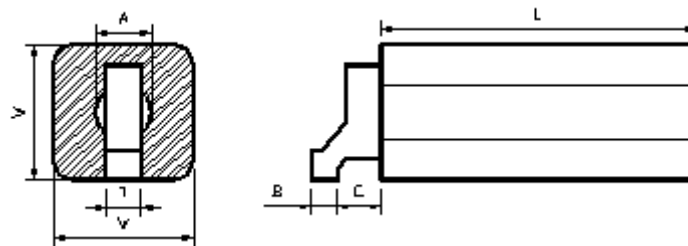
- Oscillators (DRO/VCO)
- Wireless phone
- Wireless headphone
- Filter and duplexer (CDMA/PCS/WLL/IMT2000)
- Wireless Microphone



■ Specifications

Dielectric Constant	Temperature Coefficient (ppm/°C)	SIZE	Frequency Range (MHz)	Q (Min.)
21	0 ± 15	2 x 2	2050 ~ 6000	200
		3 x 3	1300 ~ 6000	300
		4 x 4	1100 ~ 5500	400
		6 x 6	750 ~ 3300	550
		8 x 8	870 ~ 3000	700
		10 x 10	870 ~ 3000	800
		12 x 12	850 ~ 2500	850
37	0 ± 15	2 x 2	1700 ~ 6000	200
		3 x 3	1000 ~ 4550	300
		4 x 4	800 ~ 4000	350
		6 x 6	550 ~ 2400	400
		8 x 8	660 ~ 3000	680
		10 x 10	660 ~ 3000	760
		12 x 12	650 ~ 2500	800
55	0 ± 15	2 x 2	1400 ~ 5000	160
		3 x 3	800 ~ 3700	250
		4 x 4	700 ~ 3300	280
		6 x 6	450 ~ 2000	350
		8 x 8	500 ~ 2400	500
		10 x 10	500 ~ 2400	620
		12 x 12	520 ~ 2000	700
90	0 ± 15	2 x 2	1000 ~ 3900	160
		3 x 3	650 ~ 2900	230
		4 x 4	400 ~ 2650	250
		6 x 6	400 ~ 1550	350
		8 x 8	400 ~ 1800	430
		10 x 10	450 ~ 1800	500
		12 x 12	450 ~ 1500	550

■ Dimension



Part	W(mm)	A	B	C	T
2 X 2	2.00 ± 0.2	0.65 ± 0.1	0.65 ± 0.1	1.00 ± 0.2	0.40 ± 0.1
		0.80 ± 0.1			
3 x 3	3.00 ± 0.2	0.95 ± 0.1	0.70 ± 0.1	1.30 ± 0.2	0.50 ± 0.1
4 x 4	4.00 ± 0.2	1.20 ± 0.1	0.80 ± 0.1	1.30 ± 0.2	0.60 ± 0.1
		1.50 ± 0.1			
		2.00 ± 0.1			
6 x 6	6.00 ± 0.2	2.00 ± 0.1	1.20 ± 0.1	1.80 ± 0.2	0.80 ± 0.1
		2.20 ± 0.1			
		2.40 ± 0.1			
8 x 8	8.00 ± 0.2	2.80 ± 0.1	1.50 ± 0.1	1.80 ± 0.2	0.80 ± 0.1
10 x 10	10.00 ± 0.2	3.50 ± 0.1	2.00 ± 0.1	2.50 ± 0.2	1.00 ± 0.1
12 x 12	12.00 ± 0.2	3.50 ± 0.1	2.00 ± 0.1	2.50 ± 0.2	1.00 ± 0.1
		4.00 ± 0.1			