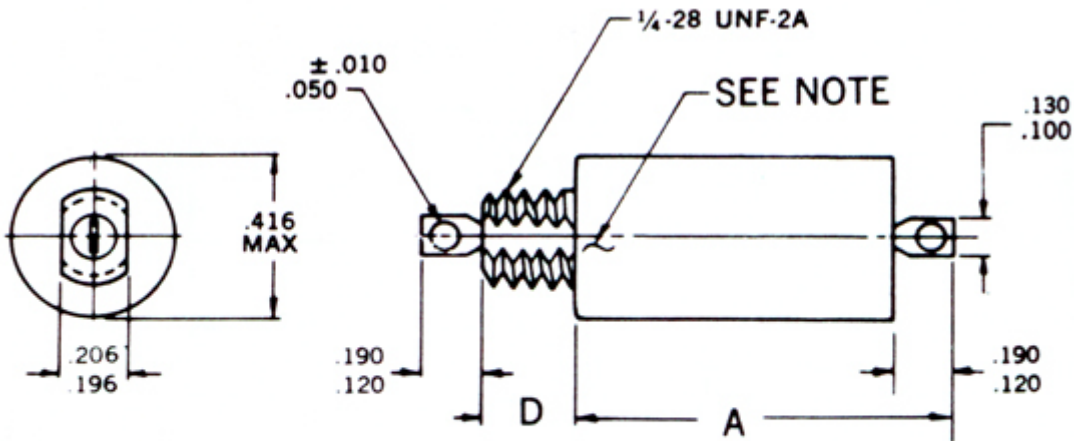


# SUBMINIATURE FILTERS

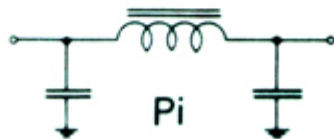
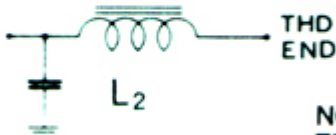
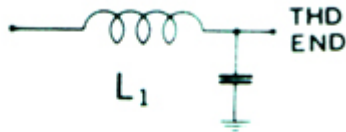
STYLES FL10 AND FL11  
M15733/23  
50 VDC AND 150 VDC



## SPECIFICATIONS

OPERATING TEMPERATURE: -55°C TO +125°C  
DIELECTRIC TEST: 2.5 TIMES RATED VOLTAGE  
INSULATION RESISTANCE: 1000 MEGOHMS MIN. @ 25°C @ RATED VOLTAGE  
CONFORMS TO THE APPLICABLE REQUIREMENTS OF MIL-F-15733.  
FILTER SUPPLIED WITH LOCKWASHER & HEX NUT  
FINISH: HOT SOLDER DIP

## CIRCUIT CONFIGURATIONS



NOTE: THE CASE SHALL BE MARKED AT THE THREADED END OF FILTER, WITH THE SYMBOL "C" OR THE SYMBOL "L", AS FOLLOWS:

CIRCUIT	SYMBOL
L <sub>1</sub>	C
L <sub>2</sub>	L

M15733/23 Dash No.	RFI Part No.	CKT	RATING					MAX VOLT DROP	MINIMUM INSERTION LOSS IN DECIBELS MIL-STD-220A (FULL LOAD)								
			AMP	DC VOLTS	A	MAX D	± .010		15KHz	30KHz	50KHz	100KHz	150KHz	300KHz	500KHz	1MHz	10MHz
0001	RF5003-1	L <sub>2</sub>	0.10	50	0.630	0.312	0.17	9	20	29	41	48	60	69	70	70	70
0002	RF5003-2	L <sub>2</sub>	0.10	50	0.630	0.187	0.17	9	20	29	41	48	60	69	70	70	70
0003	RF5003-3	L <sub>1</sub>	0.10	50	0.630	0.312	0.17	9	20	29	41	48	60	69	70	70	70
0004	RF5003-4	L <sub>1</sub>	0.10	50	0.630	0.187	0.17	9	20	29	41	48	60	69	70	70	70
0005	RF5003-5	Pi	0.10	50	0.730	0.312	0.17	15	36	50	69	79	80	80	80	80	80
0006	RF5003-6	Pi	0.10	50	0.730	0.187	0.17	15	36	50	69	79	80	80	80	80	80
0007	RF5003-7	L <sub>2</sub>	0.10	150	0.630	0.312	0.17	2	11	20	32	39	51	60	60	60	60
0008	RF5003-8	L <sub>2</sub>	0.10	150	0.630	0.187	0.17	2	11	20	32	39	51	60	60	60	60
0009	RF5003-9	L <sub>1</sub>	0.10	150	0.630	0.312	0.17	2	11	20	32	39	51	60	60	60	60
0010	RF5003-10	L <sub>1</sub>	0.10	150	0.630	0.187	0.17	2	11	20	32	39	51	60	60	60	60
0011	RF5003-11	Pi	0.10	150	0.730	0.312	0.17	—	17	31	49	60	70	70	70	70	70
0012	RF5003-12	Pi	0.10	150	0.730	0.187	0.17	—	17	31	49	60	70	70	70	70	70

0013	RF5003-13	L <sub>2</sub>	0.30	50	0.630	0.312	0.23	6	15	23	35	42	54	63	70	70	70
0014	RF5003-14	L <sub>2</sub>	0.30	50	0.630	0.187	0.23	6	15	23	35	42	54	63	70	70	70
0015	RF5003-15	L <sub>1</sub>	0.30	50	0.630	0.312	0.23	6	15	23	35	42	54	63	70	70	70
0016	RF5003-16	L <sub>1</sub>	0.30	50	0.630	0.187	0.23	6	15	23	35	42	54	63	70	70	70
0017	RF5003-17	Pi	0.30	50	0.730	0.312	0.23	4	29	44	62	73	80	80	80	80	80
0018	RF5003-18	Pi	0.30	50	0.730	0.187	0.23	4	29	44	62	73	80	80	80	80	80
0019	RF5003-19	L <sub>2</sub>	0.30	150	0.630	0.312	0.23	—	6	13	25	32	44	52	60	60	60
0020	RF5003-20	L <sub>2</sub>	0.30	150	0.630	0.187	0.23	—	6	13	25	32	44	52	60	60	60
0021	RF5003-21	L <sub>1</sub>	0.30	150	0.630	0.312	0.23	—	6	13	25	32	44	52	60	60	60
0022	RF5003-22	L <sub>1</sub>	0.30	150	0.630	0.187	0.23	—	6	13	25	32	44	52	60	60	60
0023	RF5003-23	Pi	0.30	150	0.730	0.312	0.23	—	8	24	43	53	70	70	70	70	
0024	RF5003-24	Pi	0.30	150	0.730	0.187	0.23	—	8	24	43	53	70	70	70	70	
0025	RF5003-25	L <sub>2</sub>	0.50	50	0.630	0.312	0.18	5	12	19	29	36	48	57	69	70	70
0026	RF5003-26	L <sub>2</sub>	0.50	50	0.630	0.187	0.18	5	12	19	29	36	48	57	69	70	70
0027	RF5003-27	L <sub>1</sub>	0.50	50	0.630	0.312	0.18	5	12	19	29	36	48	57	69	70	70
0028	RF5003-28	L <sub>1</sub>	0.50	50	0.630	0.187	0.18	5	12	19	29	36	48	57	69	70	70
0029	RF5003-29	Pi	0.50	50	0.730	0.312	0.18	—	21	37	56	67	80	80	80	80	80
0030	RF5003-30	Pi	0.50	50	0.730	0.187	0.18	—	21	37	56	67	80	80	80	80	80
0031	RF5003-31	L <sub>2</sub>	0.50	150	0.630	0.312	0.18	—	3	9	20	26	39	47	59	60	60
0032	RF5003-32	L <sub>2</sub>	0.50	150	0.630	0.187	0.18	—	3	9	20	26	39	47	59	60	60
0033	RF5003-33	L <sub>1</sub>	0.50	150	0.630	0.312	0.18	—	3	9	20	26	39	47	59	60	60
0034	RF5003-34	L <sub>1</sub>	0.50	150	0.630	0.187	0.18	—	3	9	20	26	39	47	59	60	60
0035	RF5003-35	Pi	0.50	150	0.730	0.312	0.18	—	—	15	37	48	66	70	70	70	70
0036	RF5003-36	Pi	0.50	150	0.730	0.187	0.18	—	—	15	37	48	66	70	70	70	70
0037	RF5003-37	L <sub>2</sub>	1.00	50	0.630	0.312	0.14	5	11	15	21	26	36	44	55	70	70
0038	RF5003-38	L <sub>2</sub>	1.00	50	0.630	0.187	0.14	5	11	15	21	26	36	44	55	70	70
0039	RF5003-39	L <sub>1</sub>	1.00	50	0.630	0.312	0.14	5	11	15	21	26	36	44	55	70	70
0040	RF5003-40	L <sub>1</sub>	1.00	50	0.630	0.187	0.14	5	11	15	21	26	36	44	55	70	70
0041	RF5003-41	Pi	1.00	50	0.730	0.312	0.14	—	—	20	41	52	71	80	80	80	80
0042	RF5003-42	Pi	1.00	50	0.730	0.187	0.14	—	—	20	41	52	71	80	80	80	80
0043	RF5003-43	L <sub>2</sub>	1.00	150	0.630	0.312	0.14	—	3	6	12	16	26	34	46	60	60
0044	RF5003-44	L <sub>2</sub>	1.00	150	0.630	0.187	0.14	—	3	6	12	16	26	34	46	60	60
0045	RF5003-45	L <sub>1</sub>	1.00	150	0.630	0.312	0.14	—	3	6	12	16	26	34	46	60	60
0046	RF5003-46	L <sub>1</sub>	1.00	150	0.630	0.187	0.14	—	3	6	12	16	26	34	46	60	60
0047	RF5003-47	Pi	1.00	150	0.730	0.312	0.14	—	—	—	18	32	51	65	70	70	70
0048	RF5003-48	Pi	1.00	150	0.730	0.187	0.14	—	—	—	18	32	51	65	70	70	70
0049	RF5003-49	L <sub>2</sub>	2.00	50	0.630	0.312	0.14	5	10	14	20	24	32	38	48	70	70
0050	RF5003-50	L <sub>2</sub>	2.00	50	0.630	0.187	0.14	5	10	14	20	24	32	38	48	70	70
0051	RF5003-51	L <sub>1</sub>	2.00	50	0.630	0.312	0.14	5	10	14	20	24	32	38	48	70	70
0052	RF5003-52	L <sub>1</sub>	2.00	50	0.630	0.187	0.14	5	10	14	20	24	32	38	48	70	70
0053	RF5003-53	Pi	2.00	50	0.730	0.312	0.14	—	—	—	33	46	65	76	80	80	80
0054	RF5003-54	Pi	2.00	50	0.730	0.187	0.14	—	—	—	33	46	65	76	80	80	80
0055	RF5003-55	L <sub>2</sub>	2.00	150	0.630	0.312	0.14	—	3	5	11	15	23	29	38	60	60
0056	RF5003-56	L <sub>2</sub>	2.00	150	0.630	0.187	0.14	—	3	5	11	15	23	29	38	60	60
0057	RF5003-57	L <sub>1</sub>	2.00	150	0.630	0.312	0.14	—	3	5	11	15	23	29	38	60	60
0058	RF5003-58	L <sub>1</sub>	2.00	150	0.630	0.187	0.14	—	3	5	11	15	23	29	38	60	60
0059	RF5003-59	Pi	2.00	150	0.730	0.312	0.14	—	—	—	—	22	45	59	70	70	70
0060	RF5003-60	Pi	2.00	150	0.730	0.187	0.14	—	—	—	—	22	45	59	70	70	70