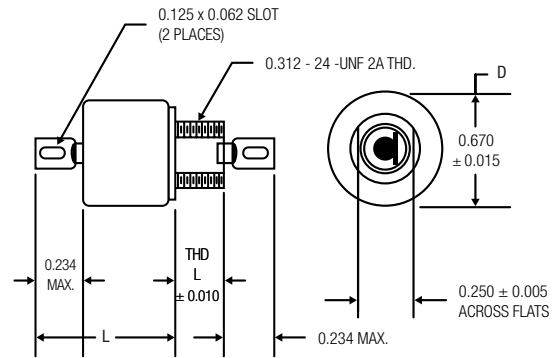
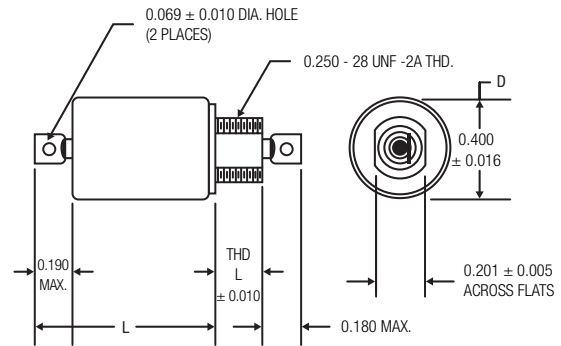
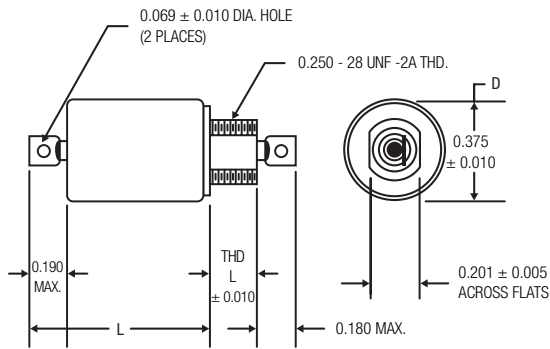
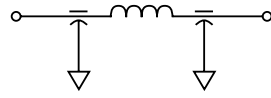


DC-RATED CERAMIC EMI-RFI FILTERS

Pi (60 dB/DECADE)

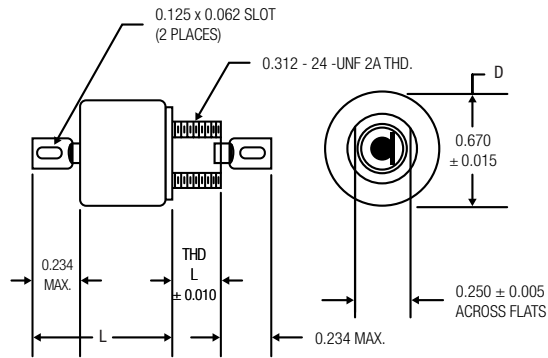
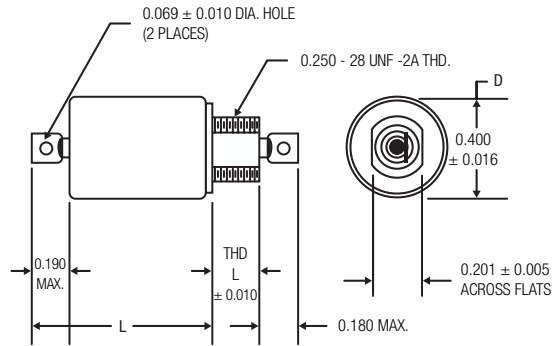
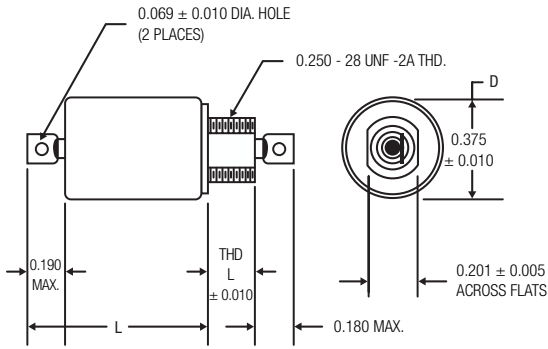
Pi (60 dB / DECADE)



Current Rating (A)	DC Voltage Rating		D (in.)	Max. L (in.)	Thd. L (in.)	Min. Cap. (μF)	Max. R _{DC} (Ω)	Minimum Insertion Loss +25°C per MIL-STD-220						Dearborn Part Number	
	@85°C (V)	@125°C (V)						30kHz (dB)	75kHz (dB)	100kHz (dB)	150kHz (dB)	1MHz (dB)	10MHz (dB)		1GHz (dB)
0.1	100	50	0.400	0.730	0.312	1.5	1.7	36	60	69	79	80	80	80	1JX2303
0.1	100	50	0.400	0.730	0.187	1.5	1.7	36	60	69	79	80	80	80	1JX2703
0.1	100	50	0.400	0.760	0.187	1.5	3.5	46	67	70	70	70	70	70	1JX2746
0.1	200	100	0.400	0.730	0.312	0.5	1.7	17	42	49	60	70	70	70	1JX2305
0.1	200	100	0.400	0.730	0.187	0.5	1.7	17	42	49	60	70	70	70	1JX2705
0.1	250	150	0.400	0.730	0.187	0.4	1.65	25	48	50	60	80	80	80	1JX2749
0.25	150	100	0.375	0.760	0.187	1.0	2.3	28	52	60	70	70	70	70	1JX2776
0.25	150	100	0.400	0.800	0.187	1.0	0.75	23	49	57	67	80	80	80	1JX2793
0.25	200	150	0.400	0.760	0.312	0.5	0.685	-	30	38	48	80	80	80	1JX2353
0.25	300	150	0.400	0.730	0.187	0.3	0.7	-	19	27	35	70	70	70	1JX2709
0.3	100	50	0.400	0.730	0.312	1.5	0.75	29	55	62	73	80	80	80	1JX2308
0.3	100	50	0.400	0.730	0.187	1.5	0.75	29	55	62	73	80	80	80	1JX2708
0.3	200	100	0.400	0.730	0.312	0.5	0.75	8.0	34	43	53	70	70	70	1JX2310
0.3	200	100	0.400	0.730	0.187	0.5	0.75	8.0	34	43	53	70	70	70	1JX2710
0.3	300	150	0.400	0.730	0.312	0.3	0.7	3.0	24	32	42	80	80	80	1JX2309
0.5	100	50	0.400	0.730	0.312	1.5	0.5	21	47	56	67	80	80	80	1JX2313
0.5	100	50	0.400	0.730	0.187	1.5	0.35	21	47	56	67	80	80	80	1JX2713
0.5	150	100	0.375	0.760	0.187	1.0	1.0	18	40	49	59	70	70	70	1JX2777
0.5	175	100	0.400	0.800	0.187	1.0	0.35	-	32	40	50	70	70	70	1JX2770
0.5	200	100	0.400	0.730	0.312	0.5	0.35	-	28	37	48	70	70	70	1JX2315
0.5	200	100	0.400	0.730	0.187	0.5	0.35	-	28	37	48	70	70	70	1JX2715
0.7	100	50	0.400	0.860	0.187	1.8	1.4	22	36	41	48	70	80	80	1JX6400
1.0	100	50	0.400	0.730	0.312	1.5	0.135	-	35	41	52	80	80	80	1JX2318
1.0	100	50	0.400	0.730	0.187	1.5	0.14	-	35	41	52	80	80	80	1JX2718
1.0	100	50	0.670	1.220	0.312	1.5	0.5	31	56	64	74	80	80	80	1JX2360
1.0	100	50	0.670	1.170	0.312	1.5	0.5	41	66	73	80	80	80	80	1JX2337
1.0	150	100	0.375	0.760	0.187	1.0	0.25	-	22	32	48	70	70	70	1JX2778
1.0	175	100	0.400	0.800	0.187	1.0	0.15	-	32	40	50	70	70	70	1JX2771
1.0	200	100	0.400	0.730	0.312	0.5	0.14	-	5.0	18	32	70	70	70	1JX2320
1.0	200	100	0.400	0.730	0.187	0.5	0.14	-	5.0	18	32	70	70	70	1JX2720
2.0	100	50	0.400	0.730	0.312	1.5	0.06	-	23	33	46	80	80	80	2JX2323
2.0	100	50	0.400	0.730	0.187	1.5	0.055	-	23	33	46	80	80	80	2JX2723
2.0	100	50	0.400	0.920	0.187	0.5	0.055	-	-	5.0	26	48	70	70	2JX2721
2.0	100	50	0.670	1.220	0.312	1.5	0.15	-	42	52	60	70	70	70	2JX2361

DC-RATED CERAMIC EMI-RFI FILTERS

Pi (60 dB / DECADE)



Current Rating (A)	DC Voltage Rating		D (in.)	Max. L (in.)	Thd. L (in.)	Min. Cap. (µF)	Max. R _{DC} (Ω)	Minimum Insertion Loss +25°C per MIL-STD-220							Dearborn Part Number
	@85°C (V)	@125°C (V)						30kHz (dB)	75kHz (dB)	100kHz (dB)	150kHz (dB)	1MHz (dB)	10MHz (dB)	1GHz (dB)	
2.0	100	50	0.400	0.800	0.312	1.5	0.07	-	32	39	50	70	70	70	2JX2359
2.0	100	50	0.400	0.730	0.312	0.5	0.055	-	-	5.0	26	48	70	70	2JX2321
2.0	150	100	0.400	0.975	0.187	1.0	0.085	-	20	31	45	80	80	80	2JX6182
2.0	150	100	0.375	0.770	0.187	1.0	0.063	-	-	-	30	70	70	70	2JX2779
2.0	175	100	0.670	0.975	0.312	2.4	0.075	20	49	59	69	80	80	80	2JX2339
2.0	200	100	0.400	0.730	0.312	0.5	0.06	-	-	10	22	70	70	70	2JX2325
2.0	200	100	0.400	0.730	0.187	0.5	0.055	-	-	10	22	70	70	70	2JX2725
2.0	300	150	0.400	0.730	0.187	0.2	0.055	-	-	-	-	62	80	80	2JX2724
2.0	300	150	0.400	0.730	0.312	0.3	0.055	-	-	-	-	62	80	80	2JX2324
3.0	100	50	0.400	0.730	0.312	1.5	0.02	-	-	20	30	80	80	80	3JX2331
3.0	100	50	0.400	0.730	0.187	1.5	0.02	-	-	20	30	80	80	80	3JX2731
3.0	100	70	0.400	0.730	0.187	1.5	0.02	-	-	14	33	80	80	80	3JX2795
3.0	100	70	0.400	0.730	0.312	1.5	0.02	-	-	15	33	80	80	80	3JX2395
3.0	100	50	0.670	1.220	0.312	1.5	0.073	-	32	41	54	80	80	80	3JX2362
3.0	175	100	0.375	0.760	0.187	1.0	0.027	-	-	-	10	70	70	70	3JX2780
3.0	175	100	0.400	0.800	0.187	1.0	0.02	-	-	-	23	80	80	80	3JX2772
3.0	175	100	0.670	1.185	0.312	2.4	0.03	-	38	46	56	70	70	70	3JX6379
3.0	175	100	0.400	0.975	0.187	1.0	0.07	-	11	24	39	80	80	80	3JX6183
3.0	200	100	0.400	0.730	0.312	0.5	0.02	-	-	-	-	65	70	70	3JX2329
3.0	200	100	0.400	0.730	0.187	0.5	0.02	-	-	-	-	65	70	70	3JX2729
3.0	250	150	0.400	0.730	0.312	0.5	0.02	-	-	-	-	68	80	80	3JX2396
5.0	100	50	0.400	0.730	0.312	1.5	0.01	-	-	-	26	73	80	80	5JX2332
5.0	100	50	0.400	0.730	0.187	1.5	0.01	-	-	-	26	73	80	80	5JX2732
5.0	100	50	0.400	0.860	0.312	3.0	0.025	-	-	27	42	80	80	80	5JX2789
5.0	150	100	0.375	0.780	0.187	1.0	0.01	-	-	-	-	68	70	80	5JX2760
5.0	175	100	0.670	1.170	0.312	1.0	0.02	-	-	22	39	80	80	80	5JX2782
5.0	175	100	0.400	0.800	0.187	1.0	0.01	-	-	-	-	70	70	70	5JX2773
5.0	200	100	0.400	0.730	0.312	0.5	0.01	-	-	-	-	55	70	70	5JX2330
5.0	200	100	0.400	0.730	0.187	0.5	0.01	-	-	-	-	55	70	70	5JX2730
5.0	250	150	0.400	0.780	0.187	0.5	0.01	-	-	-	-	70	70	80	5JX2762
10	100	50	0.400	0.660	0.187	1.5	0.003	16	22	26	30	43	62	65	10JX2507
10	100	50	0.400	0.660	0.187	1.5	0.01	16	22	26	30	43	62	70	10JX2506
10	100	50	0.400	0.660	0.312	1.5	0.01	16	22	26	30	43	62	65	10JX2107
10	150	75	0.670	1.280	0.312	2.0	0.006	16	22	28	44	48	65	70	10JX2340
10	175	100	0.375	0.730	0.187	1.0	0.003	13	21	23	27	43	70	70	10JX2781