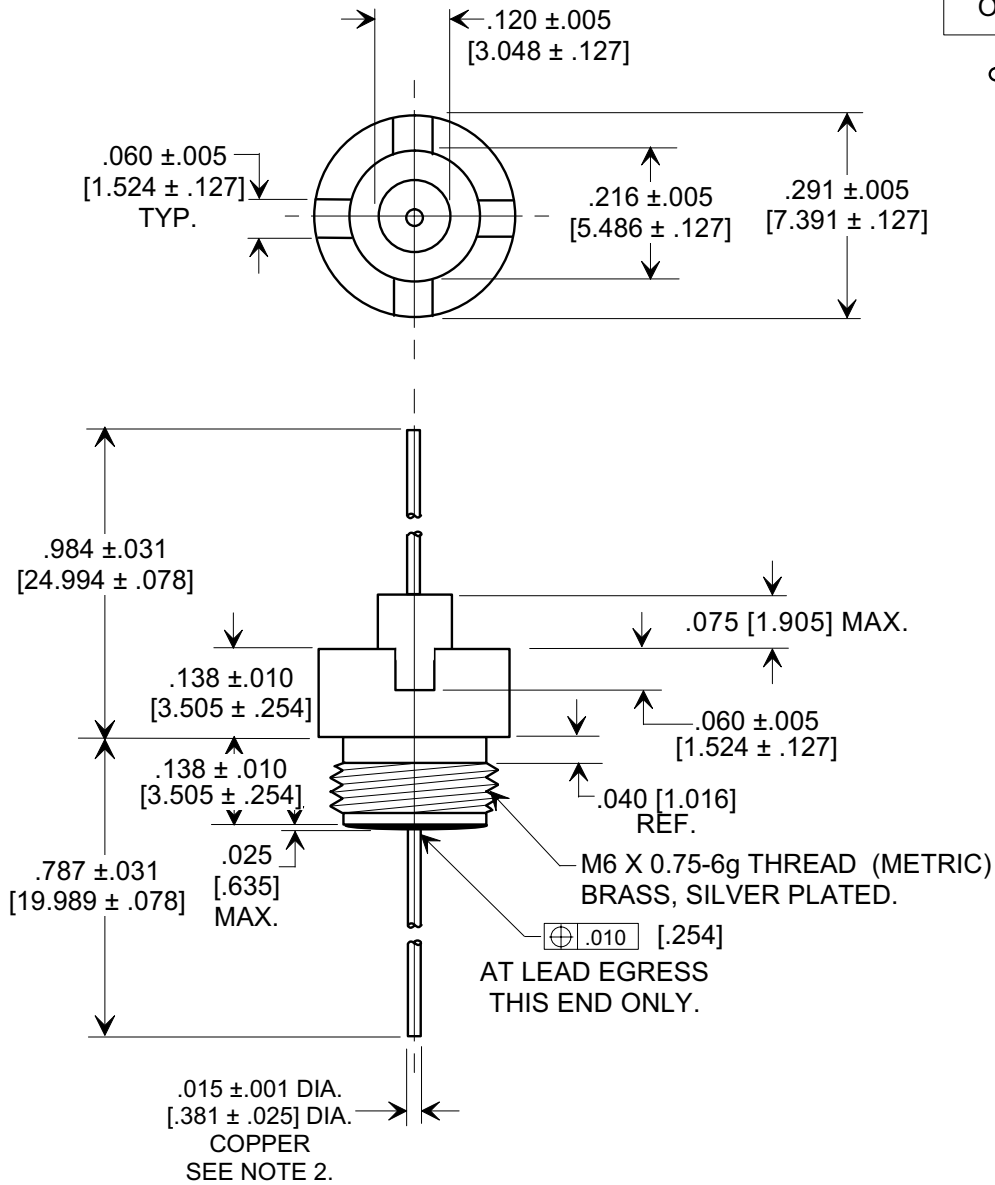
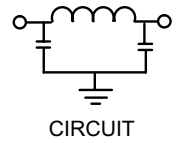
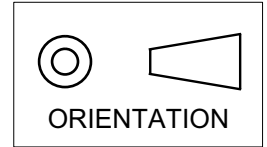


MARKETING SALES DRAWING
DIMENSIONS IN INCHES - DO NOT SCALE THIS DRAWING
DIMENSIONS IN METRIC - []

Electrical Testing
per Tusonix standard
test plans and Mil-Std-202
Test Methods.



NOTES:

- TUSONIX STANDARD PART NUMBER: 4209-006.
TUSONIX RoHS COMPLIANT PART NUMBER: 4209-006 LF.
CUSTOMER MUST SPECIFY STANDARD OR RoHS PART NUMBER WHEN ORDERING.
- LEAD FINISH: STANDARD PART #: 60/40 SOLDER PLATED. RoHS PART #: SILVER PLATED.
- PART MARKING: STANDARD PART: NO MARKING. RoHS PART: GREEN INK DOT ON EPOXY.

CAPACITANCE	WVDC		Idc (A)	IR MIN.	DWV	INSERTION LOSS - 25°C NO LOAD (dB)				COLOR BAND
	85°C	125°C				10 MHz	100 MHz	1 GHz	10 GHz	
1750pF MIN.	250	125	5	10 GΩ	500	5	35	50	50	RED.

REVISION RECORD Original Release C.O. WAS SK 7516-000. SM 03-31-99 19990316-3-01 ADDED OI ORIENTATION & NOTE 1 DELETED. S.M. 12-18-01 20011210-2-03 ADDED NOTES 1 & 3. REVISED NOTE 2. S.M. 10-14-05 20050929-1-04	--TOLERANCES-- Unless Otherwise Specified DECIMAL ±		Title EMI FILTER METRIC THREAD	
	ANGLES ±		Drawn S.M. 07-17-98	Scale 4 X
	TUSONIX TUCSON, ARIZONA		Approved T.C. 07-17-98	
	A		4209-006	

X-2015 Rev-0