

BNC 50 ohm and 75 ohm series

PLUGS AND JACKS

Connector outline	Dim		Assy. data	Greenpar Eng. No.		Cable clamp	Cable groups																				
	A	B		50 ohm	75ohm		7	10	12	22	24	25	27	29	30	52	60	61	62	73	79	117	119				
PLUGS 	27.8	14.3	15	35001		—																					
			2	35001		C																					
			15		35048*		—																				
			1 or 16	35070		A or —																					
			2	35070		C																					
			1	37570		A																					
			2	37570		C																					
			16	35018		—																					
			16	35019*		—																					
			16	35047*		—																					
			31.0 14.3	35071		2	35071		C																		
			31.0 14.3	37571		2	37571		C																		
				35002		11	35002		A																		
				35002		8	35002		C																		
				37502		11	37502		A																		
	37502		8	37502		C																					

ORDERING INFORMATION

To order, please specify GREENPAR ENGINEERING No., CABLE CLAMP and CABLE GROUP. e.g. GE 37570C12

Notes.

*1. These items are nominally 75 ohms. See U.G. numbers and assembly instructions for variations

Connector outline	Dim	Assy. data	Greenpar Eng. No.		Cable clamp	Cable groups																						
			50 ohm	75ohm		7	10	12	22	24	25	27	29	30	52	60	61	62	73	79	117	119						
JACKS 	11.1	14.3	15	35003		—																						
			2	35003		C																						
			16	35020		—																						
			1 or 16	35060		A or —																						
			2	35060		C																						
			1	37560		A																						
			2	37560		C																						
			15	35021*		—																						
			16	35022*		—																						
			16	35037*		—																						
	35061		2	35061		C																						
	37561		2	37561		C																						

ORDERING INFORMATION

To order, please specify GREENPAR ENGINEERING No., CABLE CLAMP and CABLE GROUP. e.g. GE 37561C27.

Notes.

*1. These items are nominally 75 ohms. See U.G. numbers and assembly instructions for variations

Fig. 1. Plugs and jacks: captive contact, improved UG style braid clamp

1. Place clamp nut, flat washer (when provided) and V-groove gasket over cable. Note that groove in gasket is towards free end of cable.
2. Trim outer sheath from cable to dimension shown.
3. Fit braid clamp so that internal shoulder butts against end of outer sheath.
4. Fold back braid, avoiding crossed wires, and trim surplus braid.
5. Trim dielectric and check that dimension of exposed centre conductor is as specified.
6. Tin centre conductor.
7. Slide clamp bushing over dielectric to butt against braid, and fit rear insulator to butt against bushing.

8. Fit contact (male for plugs; female for jacks) over centre conductor, to butt against rear insulator.
9. Hold contact and cable firmly together, and solder.
10. Slide V-groove gasket, flat washer (when provided) and clamp nut to braid clamp.

11. Fit front insulator over contact to butt against rear insulator.
12. Press sub-assembly into body as far as possible, and engage clamp nut.
13. Holding body and cable rigid, tighten clamp nut to shear V-groove gasket.

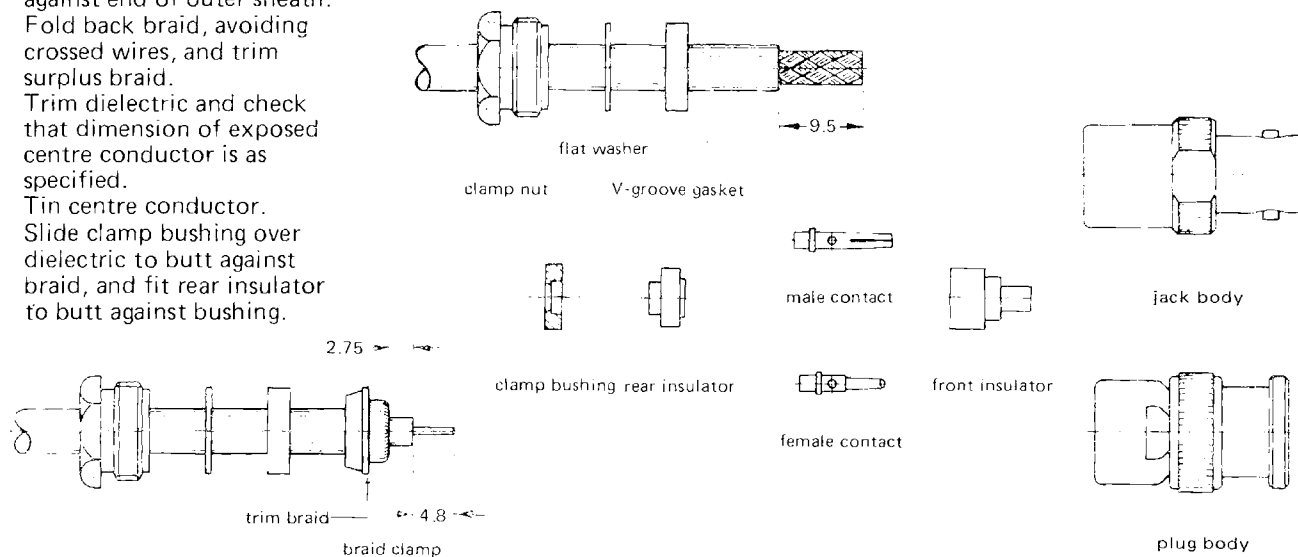


Fig. 2. Plugs and jacks: captive contact, pressure sleeve cable clamp

For C73 refer to Fig. 9.

1. Slide clamp nut and plain gasket over cable.
2. Trim outer sheath from cable, as indicated.
3. Fold back braid, and insert ferrule over dielectric to trap braid between outer sheath and ferrule.
4. Trim off surplus braid.
5. Trim back dielectric and check that dimension of protruding centre conductor is as indicated.

6. Tin centre conductor.
7. Slide rear insulator over dielectric, to butt against ferrule.
8. Fit contact (male for plugs; female for jacks) on centre conductor, with shoulder pressed into recess in rear insulator.
9. Hold cable and contact tightly together, and solder.

10. Slide plain gasket and clamp nut up to ferrule, trapping braid.
11. Fit front insulator over contact to butt against rear insulator.
12. Press sub-assembly into body as far as possible.
13. Engage and tighten clamp nut.

