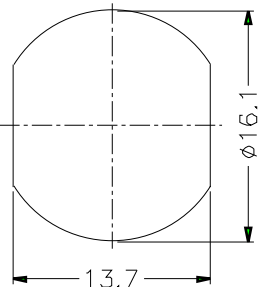
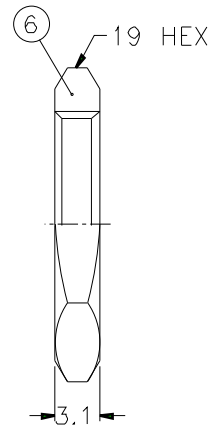
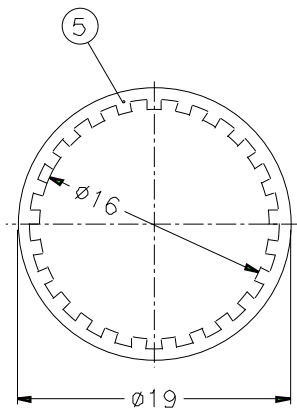
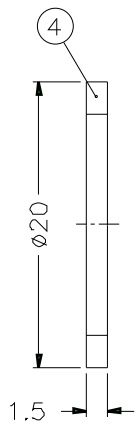
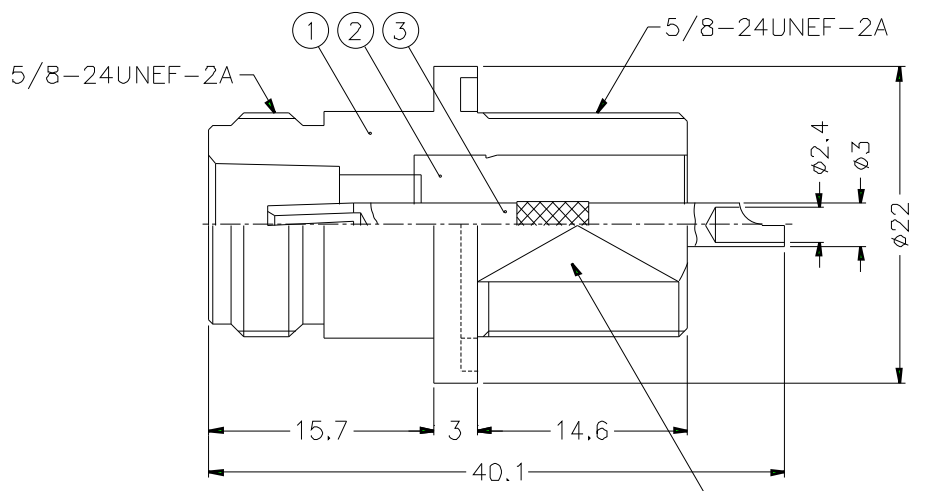


REVISIONS		
ISS	ZONE	DESCRIPTION\PER REQUEST\DATE



RECOMMENDED MOUNTING HOLE



- NOTES: FINISH (PLATING THICKNESS IN MICRO-INCHES)
- 1. BRASS PER QQ-B-626
 - 2. BRASS PER QQ-B-613
 - 3. NICKEL PL 100 MIN. THICK OVER COPPER STRIKE
 - 4. PHOSPHOR BRONZE PER QQ-B-750
 - 5. GOLD PL. 3 MIN. THICK OVER NICKEL PL. 100 MIN. THICK OVER COPPER STRIKE
 - 6. TEFLON MIL-P-19468

DIMENSIONS ARE IN MILLIMETERS				PART NO. N6351A1 NT3G 50	
UNLESS OTHERWISE SPECIFIED TOLERANCES				APPROVED	DATE
0.5-6 = ±0.2					10-11-01'
6-30 = ±0.4				CHECKED	DATE
30-120 = ±0.6					10-11-01'
120-315 = ±1				DRAWN	DATE
315-1000 = ±1.6					10-11-01'
1000-2000 = ±2.4				FILE NO.	
SCALE	2/1	ISSUE	A		

Amphenol	
TITLE N BULKHEAD RECEPT. JACK	
DRAWING NO. KJ-N6351A1-NT3G-50	
ITEM NO.	

NO.	DESCRIPTION	MATERIAL	FINISH	Q'TY	DRAWING NO.
6	HEX NUT	NOTE 1	NOTE 3	1	HN19-5/8-24X31
5	LOCK WASHER	NOTE 2	NOTE 3	1	LW-19/16X06
4	GASKET	SILICONE	RED	1	GS-20/16X15
3	CONTACT PIN	NOTE 4	NOTE 5	1	N6351A1-3
2	INSULATOR	NOTE 6	NATURAL	1	N6351A1-2T-50
1	BODY	NOTE 1	NOTE 3	1	N6351A1-1-B