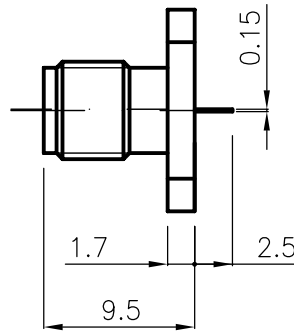
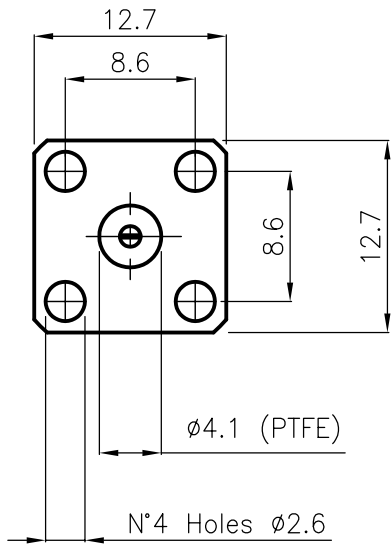


DIST.

A TERMINI DI LEGGE E' VIETATA LA RIPRODUZIONE O LA NOTIFICAZIONE DI QUESTO DISEGNO A TERZI SENZA AUTORIZZAZIONE



SPECIFICATIONS

Mating and dimensions as per CECC 22110

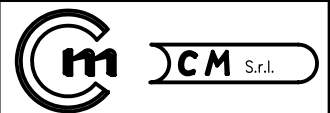
MATERIALS AND FINISH

P.N. SUFFIX	Body	Socket inner contact
002	Brass Au 0.5 $\mu$	Beryllium copper Au 1.27 $\mu$
202	Stainless steel passivated	Beryllium copper Au 1.27 $\mu$
302	Stainless steel Au 0.5 $\mu$	Beryllium copper Au 1.27 $\mu$
502	Brass *)Optalloy	Beryllium copper Au 1.27 $\mu$

\*)Optalloy is equivalent to "SUCOPLATE"

CAPTIVATED CONTACT

			DENOMINAZIONE		
			50 Ohm - SMA SERIES COAXIAL CONNECTOR STRAIGHT SOCKET WITH SOLDER TERMINAL		
01	Aronica R.	08.06.03	SCALA	2:1	CONTR. CUCCHI I.
/	EMESSO	26.06.95	FILE	DPD1702C	DATA
REV.	N° MOD.	DATA			DIS. ARONICA R.



N° CODICE

DPD.17.XX2