

Chip Type Ceramic Trimmer Capacitors

Series: **J**

Ceramic Trimmer Capacitors, Series J, are miniature and thin type surface mounting devices, being encased in the thermosetting plastic case. Especially sealing membrane types (Design No. of "12") are applicable to immersion into flux and solder bath.

■ Features

- Miniature and thin type SMD: 4.0 × 4.5 × 2.7 mm
- Embossed taping types are available for automated machines
- Easy reading of nominal capacitance by colored case

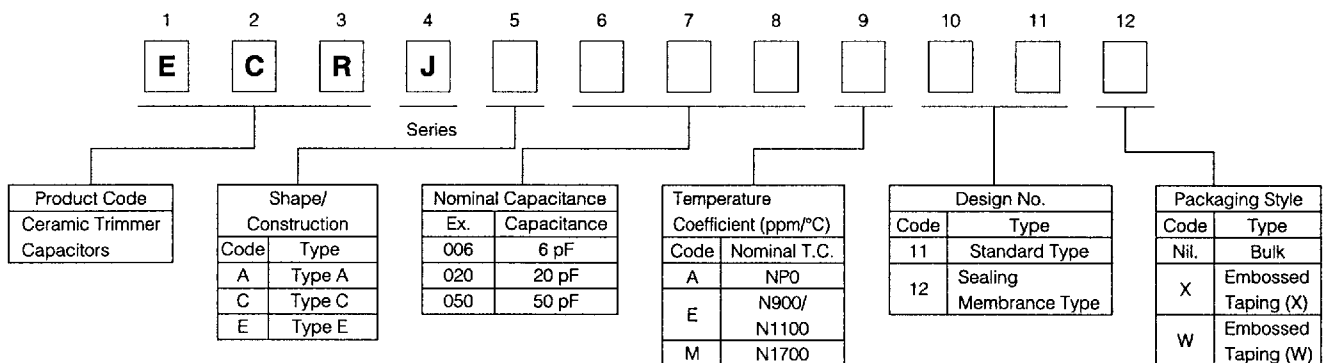
[Sealing Membrane Type (Design No. of "12")]

- Applicable to flow and reflow soldering
- Applicable to immersion into flux and solder bath
- Stable against solvent cleaning

■ Recommended Applications

- Hybrid IC and micromodule
- Portable radio and portable cassette tape player
- VTR camera
- Paging system

■ Explanation of Part Numbers



■ Ratings and Characteristics

Item	Ratings
Rated Voltage	100 VDC
Dielectric Withstanding Voltage	220 VDC
Insulation Resistance (at C max.)	10 ⁴ MΩ min. at 100 VDC and 1 minute electrification
Rotation Torque	1.47 to 9.81 mN · m (15 to 100 gf · cm)
Operating Temperature Range	- 25 to +85 °C

● Standard Type

Part Number		Capacitance (pF)		Temperature Coefficient (ppm/°C)	Q (at 1 MHz, C max.)	Color Marking
Type A	Type E	max.	min.			
ECRJA003A11□	ECRJE003A11□	3 ^{+50%}	1.7 max.	NP0±200	300 min.	White
ECRJA006A11□	ECRJE006A11□	6 ^{+50%}	2.5 max.	NP0±200	500 min.	Blue
ECRJA010A11□	ECRJE010A11□	10 ^{+50%}	3.5 max.	NP0±300		White
ECRJA020E11□	ECRJE020E11□	20 ^{+50%}	5.5 max.	N900±350	300 min.	Red
ECRJA030E11□	ECRJE030E11□	30 ^{+50%}	7.5 max.	N1100±450		Green
ECRJA050M11□	ECRJE050M11□	50 ^{+100%}	15.0 max.	N1700±600	200 min.	Orange

■ Dimensions in mm (not to scale)

Type	A	E
Dimensions in mm	<p>ECRJA□□□□□□□□</p>	<p>ECRJE□□□□□□□□</p>
Recommended Land Layout		

■ Ratings and Characteristics

Item	Ratings
Rated Voltage	100 VDC
Dielectric Withstanding Voltage	220 VDC
Insulation Resistance (at C max.)	10 ⁴ MΩ min. at 100 VDC and 1 minute electrification
Rotation Torque	1.47 to 9.81 mN · m (15 to 100 gf · cm)
Operating Temperature Range	- 25 to +85 °C

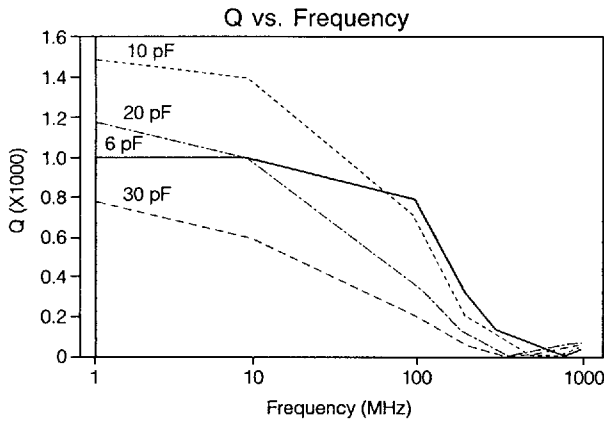
● Sealing Membrane Type

Part Number			Capacitance (pF)		Temperature Coefficient (ppm/°C)	Q (at 1 MHz, C max.)	Color Marking
Type A	Type E	Type C	max.	min.			
ECRJA003A12□	ECRJE003A12□	ECRJC003A12□	3 ⁺⁵⁰ ₀ %	1.7 max.	NP0±200	300 min.	White
ECRJA006A12□	ECRJE006A12□	ECRJC006A12□	6 ⁺⁵⁰ ₀ %	2.5 max.	NP0±200	500 min.	Blue
ECRJA010A12□	ECRJE010A12□	ECRJC010A12□	10 ⁺⁵⁰ ₀ %	3.5 max.	NP0±300		White
ECRJA020E12□	ECRJE020E12□	ECRJC020E12□	20 ⁺⁵⁰ ₀ %	5.5 max.	N900±350		Red
ECRJA030E12□	ECRJE030E12□	ECRJC030E12□	30 ⁺⁵⁰ ₀ %	7.5 max.	N1100±450	300 min.	Green
ECRJA050M12□	ECRJE050M12□	ECRJC050M12□	50 ⁺¹⁰⁰ ₀ %	15.0 max.	N1700±600	200 min.	Orange

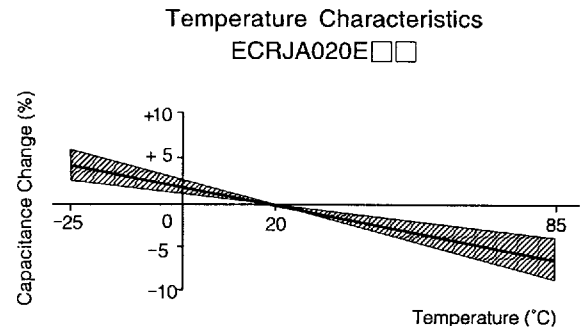
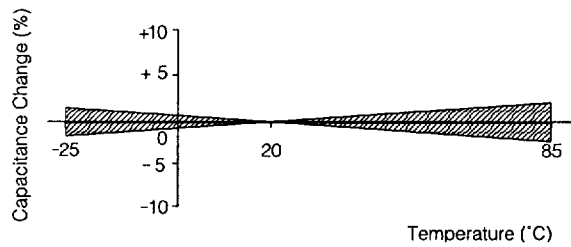
■ Dimensions in mm (not to scale)

Type	A	E	C
	ECRJA□□□□□□□□	ECRJE□□□□□□□□	ECRJC□□□□□□□□
Dimensions in mm			
Recommended Land Layout			

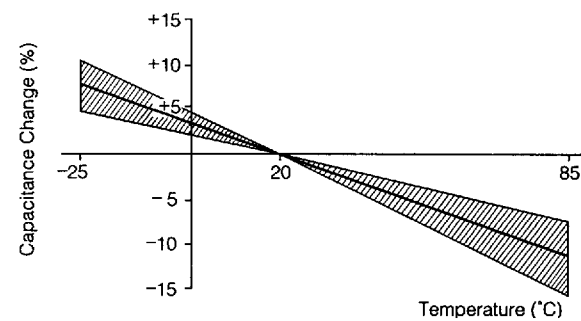
Typical Characteristics



ECRJA010A□□



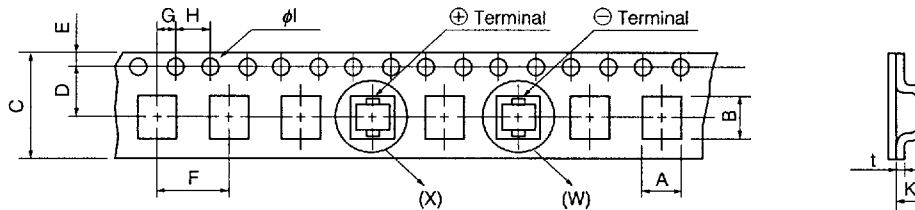
ECRJA050M□□



Packaging Specifications

- Taping Dimensions in mm (not to scale)

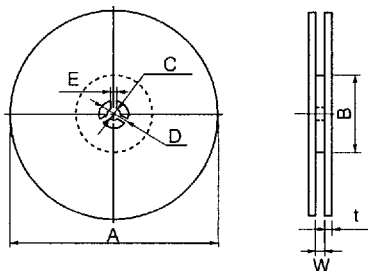
Carrier Tape



A*	B*	C	D	E	F	G	H	K	t	l
4.5±0.1	5.4±0.1	12.0±0.3	5.5±0.1	1.75±0.10	8.0±0.1	2.0±0.1	4.0±0.1	3.2±0.2	0.30±0.05	1.5±0.1

- Reel Dimensions in mm (not to scale)

Reel



A	B	C	D	E	W	t
φ180	φ60	φ13	φ23	2.0	13.5	1.1
φ330	φ80	φ13	φ23	2.5	13.5	2.0

- Packing Quantity

Taped Type	Part Number	Reel (mm)	Packaging Quantity
X	ECRJ□□□□□□□X	φ180	700 pcs.
	ECRJ□□□□□□□A	φ330	2500 pcs.
W	ECRJ□□□□□□□W	φ180	700 pcs.
	ECRJ□□□□□□□B	φ330	2500 pcs.